

Agape

The Newsletter of
Calvary Episcopal Church
Pittsburgh, Pennsylvania

MARCH 10, 2024

Charting Growth: Calvary's Capital Campaign Journey

Our Faith Formation class at Calvary embarked on a creative mission to visually capture the essence of our church's Capital Campaign. With a monumental goal of raising \$6 million to Preserve, Sustain, and Share, we wanted our chart to be more than just numbers; we wanted it to be a vibrant testament to faith and God's creation. So, with colorful markers and big sheets of paper spread out, we began brainstorming how to bring this vision to life.

The idea blossomed like the very sunflowers we plant each spring in our garden. We decided to draw a tall, flourishing tree with a large, radiant sun at its center, mirroring the sunflowers that reach toward the sky in our garden. These sunflowers are special to us; they start as tiny seeds but grow into something magnificent and bountiful, a miracle we witness year after year. This growth from a small beginning to something grand became the perfect symbol for our campaign's journey.

At the heart of our tree, we placed the sun, not just any sun, but one that embodies the warmth and brightness of God's love. This sun also holds a deeper meaning for us – it reminds us of the Body of Christ that we celebrate during the Eucharist. Just as the sunflowers turn towards the sun, we are drawn to the light of Christ, nurturing our faith and community.

Around the tree, we added flowers, bees, and birds, and even a life-giving river winding its way through the landscape. These elements represent the interconnectedness of all life in God's creation. Each creature, each plant, relies on the others, just as we depend on one another in our faith community.

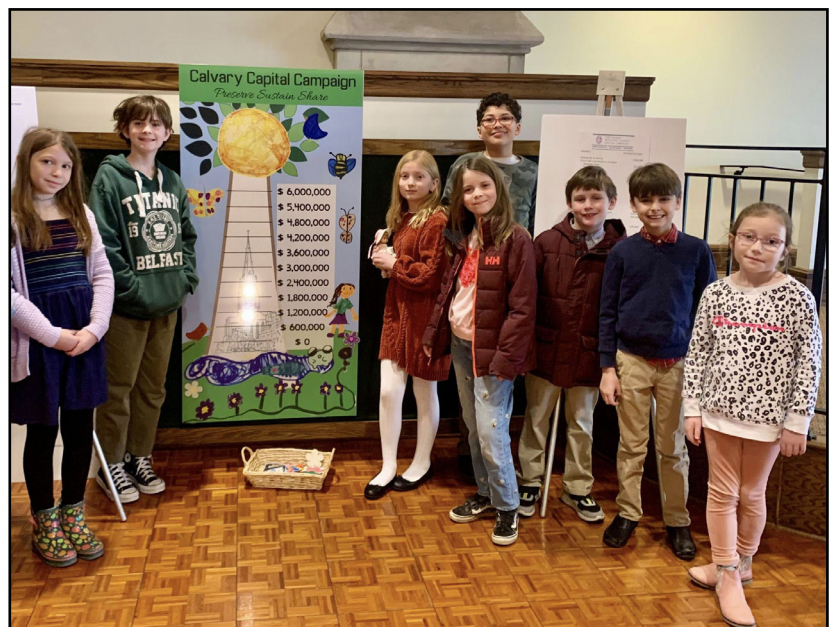
Fluttering among the branches, a butterfly catches the eye. To us, it's a powerful symbol of Christ's resurrection and our own hope for renewal. This theme of renewal is echoed in the

very structure of our chart. Within the tree, we carefully outlined the shape of Calvary church, signifying the ongoing growth and blossoming of our faith and community under God's nurturing care.

As for tracking our progress towards the \$6 million goal, we chose to use lights – each one representing a step closer to our target. These lights are not just markers; they symbolize bringing more of God's light into our church and community, both literally and figuratively.

Creating this chart was more than an art project for us. It was a way to express our faith, our hopes, and our commitment to the campaign. We see it not just as a tracker of funds, but as a living representation of our journey together, growing in God's love and light, just like the sunflowers in our garden. Through this chart, we hope to inspire our church community to see the beauty and potential in each contribution, no matter how small, toward achieving something truly glorious.

–Vicki Rispoli ■



LENT, HOLY WEEK, AND EASTER AT CALVARY 2024

SUNDAYS IN LENT

March 10, 17

The Holy Eucharist, Rite II,
will be celebrated at 8 A.M., 9 A.M., 11* A.M.



WEEKDAYS IN LENT

The Holy Eucharist will be celebrated
in the Lady Chapel on Wednesdays at Noon.

Evening Prayer at 6 P.M. in the Lady Chapel
each Monday and Thursday through March 21



Palm Sunday, March 24

Liturgy of the Palms, Holy Eucharist and Sermon
at 8, 9 & 11* A.M.

Musical Meditation on the Passion of the Christ
at 5* P.M.



Monday in Holy Week, March 25

The Holy Eucharist, in the Lady Chapel, 6 P.M.

Tuesday in Holy Week, March 26

The Holy Eucharist, in the Lady Chapel, 6 P.M.

Wednesday in Holy Week, March 27

The Holy Eucharist, in the Lady Chapel,
at Noon and 6 P.M.



Maundy Thursday, March 28

The Holy Eucharist in the Lady Chapel, at 12 NOON;

The Holy Eucharist and Stripping of the Altar,

7:30* P.M.



Good Friday, March 29

Good Friday Liturgy, 12* NOON;

*Following the service, the Church will remain open
for meditation from 1:30 until 3 P.M.*

Nursery Care will be available 12 NOON to 1:30 P.M.

Good Friday Liturgy, 7:30* P.M.

The Great Vigil of Easter, March 30, 8* P.M.

Lighting of the Paschal Candle, Scriptural Prophecies,
Baptisms, and the First Eucharist of Easter



Easter Day, March 31

Holy Eucharist and Homily at 8 A.M.

Festal Holy Eucharist and Sermon at 9 & 11* A.M.

Easter Egg Hunt, 10:15 A.M.

* INDICATES THE SERVICE WILL BE LIVESTREAMED

Prayer and Anointing for Healing on Sundays at 11 a.m.



The ministry of healing prayer is rooted in Jesus' own ministry, a significant portion of which involved healing and caring for those who suffered in body, mind and spirit. Throughout the season of Lent, we will offer healing prayer by anointing with oil and the laying on of hands during communion at the 11 a.m. service. If you would like to receive this healing prayer, please come to the Lady Chapel after you receive communion. The priest who is distributing communion at the station by the pulpit will join you there to offer this healing prayer. In Easter, we will evaluate to see if we want to continue this practice. ■

Tuesday Night 2024 Lenten Preaching Series

“Hope –
Rooted in Christ”



6 P.M. Dinner • 7 P.M. Holy Eucharist with hymns and sermon

March 12

St. Andrew's Preacher: The Rev. Leslie Reimer
5801 Hampton Street, Highland Park

March 19

Redeemer Preacher: The Rev. Carter Hawley
5700 Forbes Avenue, Squirrel Hill

Calvary's Office Hours
Monday – Friday, 9 a.m. to 4 p.m.



As one of your Lenten disciplines, consider joining with other parishioners at Calvary for the service of Evening Prayer at 6 p.m. in the Lady Chapel each Monday and Thursday of Lent (through March 21).

Praying at certain points of the day has its origins in Judaism and was practiced in the early church and monastic traditions. Evening Prayer is derived from the monastic prayer services and is one of the Daily Offices found in our *Book of Common Prayer*. The service of Evening Prayer is about 20 minutes long and includes Psalms, Scripture, and Prayers for the day (but no sermon or music).

If you have questions or are interested in helping to lead this service, please contact Steve Shandor (steve.shandor@gmail.com) or Michael Salmon (oriolefish@gmail.com). ■

MUSICAL NOTES by Alan Lewis



Mid-March in Pittsburgh has for many years meant Bach. Don Franklin, the beloved music historian at the University of Pittsburgh, offered concerts of Bach's music around the anniversary of the master's birthday for decades, even after his formal retirement from the University. After his death, in 2021, Chatham Baroque took up the mantle of presenting a Bach-themed concert every year around the same occasion. This year's performances take place at Calvary on Friday and Saturday, March 15 and 16, at 7:30 p.m., and include the Sixth "Brandenburg" concerto, the solo cantata "Ich habe genug" with bass-baritone Jonathan Woody, and the remarkable six-part Ricercar from *The Musical Offering*. I have the pleasure of opening the program with one of Bach's Preludes and Fugues for organ (the larger of the ones in C major). Tickets can be purchased on-line at www.chathambaroque.org, or at the door prior to either concert. (Although seating at Calvary is, of course, ample, early arrival is recommended, as the ticketing is for open-seating, and their concerts have been drawing large audiences.)

The final week of the month, of course, is Holy Week, beginning on March 24 with Palm Sunday. On that day, in addition to the usual morning services tracing Jesus' triumphal entry into Jerusalem and the betrayal and suffering that followed, the choir offers a Musical Meditation on the Passion at 5 p.m., a service in which brief

readings and various musical reflections offer signposts along the Way of the Cross. The general pattern of this service is borrowed from St. John's College, Cambridge, where it was developed decades ago to offer the worshipping community of students an encounter with the Passion, even though Holy Week itself always lay outside of the school-term. This is a fairly recent service at Calvary, but seems already to be an effective and moving way of engaging with the Passion through choral and organ music and congregational song.

Maundy Thursday is always a moving component of Holy Week, combining the commemoration of the Last Supper and the Institution of the Eucharist with the stripping of the altar and the pivot into the "Three Days," or Triduum, that are the climax of Holy Week. On Good Friday, we will offer the Prayer Book liturgy for that day, with the extended reading of St. John's account of Jesus' Passion, the Solemn Collects, and Communion from the reserved Sacrament, at Noon and 7:30 p.m., with music at both liturgies; each will last just over an hour. (The church remains open for private meditation from the close of the Noon liturgy until 3 p.m., when the tower bell is tolled.)

The Great Vigil of Easter, with its moving journey from darkness into Paschal light, is on Saturday evening beginning at 8 p.m. The chanted Exsultet and psalms are always part of this service, as is Bairstow's rousing anthem, *Sing Ye to the Lord*. This year, we'll also offer the Bairstow anthem (with added brass quintet) on Easter morning just before the 9 and 11 a.m. services begin, along with Stanford's jubilant anthem, *Ye Choirs of New Jerusalem*.

Finally, rounding the corner into April, the Choir hopes to have you join us for Evensong on the afternoon of April 7, at 5 p.m., with more music of "Easter triumph, Easter joy" as we continue what we hope will be a joyful Eastertide indeed. ■

Calvary Young Adult Ministry Volunteers

Thank you to everyone who helped prepare and serve dinner for our friends at the East End Cooperative Ministry last month! Contact Zach Rispoli at zach.rispoli@gmail.com or 210.355.3366 if you'd like to learn more about volunteering with CYAM. ■



Gun Safety Legislation

Last May the Pennsylvania House of Representatives passed gun safety legislation with bipartisan support. These bills would establish universal background checks (HB 714) and create Extreme Risk Protection Orders (HB1018). The State Senate must hold hearings and vote on these bills in order for them to become law. This has not yet happened. Gun-safety advocacy groups are encouraging Pennsylvanians to contact the leaders of our State Senate and ask that the Senate move this legislation forward.

To help interested parishioners with this, a table of information and supplies will be set up in the Parish Hall on Sunday, March 17, before and after each service. Jeanette Trauth, a member of Temple Sinai and the Religious Action Center of Reform Judaism (RAC), will be present during the Christian Formation hour (10–11 a.m.) that day to answer questions and otherwise help people write letters to Senate Judiciary Committee Chair Lisa Baker, Senate Majority Leader Joe Pitman, and Senate President Pro Tempore Kim Ward.

If you have questions or would like more information, please contact Cameron (csoulis@calvaryphg.org), or Theresa Chalich (tchalich@gmail.com). ■

EECM Food Pantry

East End Cooperative Ministry operates the second largest food pantry in Pittsburgh. Donations can be dropped off at Calvary during office hours: Monday thru Friday 9 a.m. to 4 p.m. and on Sunday mornings. Below is a list of items particularly requested at this time. **Thank you to all who have continued to donate to the EECM food cart.** Your support is greatly appreciated.

- Bottled Water • Instant mashed potatoes
- Canned tomato sauce, vegetables, beans
- Spaghetti and macaroni pasta
- Canned soups • Mac & Cheese boxes
- Oatmeal and whole grain cereals
- White and brown rice
- Disposable utensils (fork, spoon, knife)
- Disposable plates • Disposable bowls
- Ziploc bags, any size • Napkins
- Paper Towels • Sugar • Salt ■



Altar Flowers

Help us keep the church altars in full bloom, including the newest one in the Transept Narthex, by donating flowers in memory of, or in honor of, someone special. If you would like to place a memorial listing, please contact Kim Pieratt in the church office at 412.661.0120, ext. 111. ■

Downtown Walk-in Ministry

HOW YOU CAN HELP

Trinity Cathedral downtown hosts a walk-in ministry that provides the most vulnerable among us food, toiletries, clothing, and referral services. They participate along with four other downtown churches as members of the Downtown Ministerium.

They would appreciate donations of individually packaged shampoo, bar soap, razors, toothbrushes, toothpaste, dish detergent, laundry detergent, rolls of toilet paper, feminine hygiene products, and diapers (especially size 4 and 5). Clothing donations of adult underwear and socks is also in demand.

There is a collection box in the Parish Hall. Thank you! ■

Spiritual Reflection – Kate Bowler

Adult spiritual formation may be described as the step-by-step discovery of God's presence in our lives and our personal transformation along the way. In Calvary's Spiritual Reflection meetings, we share, reflect upon, and discuss inspirational ideas that develop and deepen our personal relationships with God and with one another. At each meeting, a short reading serves as a catalyst for discovery of God in our daily lives. Meetings are group-led, and no preparation is required. Our interactions follow the Principals for Contemplative Dialogue of the Merton Institute for Contemplative Living.

For this term we will use Kate Bowler's *Good Enough*. A religion professor at Duke, Bowler gained national attention with her book *Everything Happens for a Reason (and other lies I've loved)*, written after her Stage IV cancer diagnosis at age 35. *Good Enough*, with co-author Jessica Ritchie, is a collection of devotionals and prayers that push back against our culture's messages of "living your best life now" and forced positivity. "This book understands me, especially the parts I keep hidden," says author Barbara Brown Taylor.

Meetings are held in the Evans Room from 7-8 p.m. on the first and third Tuesday evening of each month. The meetings are hybrid, allowing "in person" conversation while others join remotely using Zoom. Upcoming meeting dates are March 19, April 2 and April 16. Email Matt Muldoon (mattmuldoon@msn.com) or Sondra Krimmel (sskrimmel@gmail.com) for information or to be added to the email list. Please feel welcome to join us at any time. ■

Clergy Contact Information

- The Rev. Jonathon Jensen, jjensen@calvaryphg.org
- The Rev. Cameron Soulis, csoulis@calvaryphg.org
- Deacon Geoffrey Royce, groyce@calvaryphg.org
 - Rabbi Aaron Bisno, rabbi@calvaryphg.org
 - Deanna Briody, dbriody@calvaryphg.org ■

From the Rabbi-in-Residence

What I Admire Most about Calvary

by Rabbi Aaron Bisno

You know what I admire most about Calvary? Beyond the people, I mean. After all, they – by which I mean, you! – are, to a person, amazing! But that goes without saying.

What I admire most about Calvary (I tell this to everyone) is that what goes on here is “just Christianity.” No one is confused; this sacred community is about nothing less.

In a world consumed by the tumultuous waves of social issues and political agendas, Calvary Episcopal stands out as an oasis of genuine devotion. Here, the focus is not on the latest headlines or the pressures of taking stands on divisive matters, but on the timeless teachings that define the Christian faith.

In the two years I have had the privilege of serving as your Rabbi-in-Residence, time and again, I have been privileged to witness how Calvary is a haven within which the true heartbeat of Christianity resounds with unwavering strength. And it is this – the profound clarity in purpose at Calvary – the idea that our job is to bring people closer to God and to be of help to our neighbors. This is what captivates and inspires me most.

In a society often swayed by the winds of change in service to the contemporary, Calvary Church remains rooted in the principles that have defined its existence for generations. In a culture where the world demands immediate opinions and public stances, Calvary stands tall by refusing to be distracted by the tide of popular opinion.

Calvary’s strength is found not just in the inspiring architecture and exquisite liturgy and music within this sacred space, but in the collective, focused spirit of this powerful community. It’s heartening to be part of a congregation that understands the power of spiritual growth and connection, unfettered by the distractions of the outside world. And I am continually moved by the dedication of Calvary’s members and clergy, who, with grace and humility, embrace loving God and neighbor, which, to my mind, is the truest essence of Christianity.

For me, Calvary Church is not just a house of worship that welcomed me. No, ours is a sacred community that serves as a testament to the enduring and loving values that bind all of us together. In a society that often seeks validation through public posturing, and jumping to be part of the latest fashionable trends, Calvary Church distinguishes itself from so many other religious communities by embodying

the truest and timeless essence of the Christian faith. This is the inspiration we all need in a time of such rapid change.

May Calvary and all who love her remain committed to continuing to serve as God’s emissaries in the world, as all of us together continue building a world wherein God’s presence is experienced as a direct result of our focus on what we were created to make real in our lives and in the world around us. ■

Thank You!

Thank you to all who participated, helped and cooked for the Shrove Tuesday pancake supper...



and to all who helped prepare the coffee hour celebrating ten years together with Jonathon as our Rector. ■



Coffee Hour Hosts Needed

Now that coffee hours have resumed, we need hosts to help us. Your group can sponsor a coffee hour by bringing, plating and arranging small sweet and savory snacks for enjoyment after the 11 o’clock service each Sunday. If you are interested, please sign up with Kathy Farrington at farringtonk@me.com or use the sign in the Parish Hall. ■



PITTSBURGH • MAY 13-16, 2024

Volunteer Opportunity for Festival of Homiletics

Calvary will co-host a national preaching conference, the Festival of Homiletics, from May 13-16, 2024. The event will bring 1,000-1,200 preachers to Pittsburgh for several days to hear sermons and attend workshops from excellent homilists, from diverse backgrounds, from all fifty states and abroad.

The Festival of Homiletics is an annual event that moves to a different city each year. Participants and workshop leaders are mostly from the “mainline” Protestant denominations such as Episcopal, Lutheran, Presbyterian, and Methodist.

Calvary will be a host site along with East Liberty Presbyterian Church and the Pittsburgh Theological Seminary. Over four days, the sites will host preachers and workshops from morning to night. Rabbi Jeff Myers and the Rector will lead a workshop on interfaith work.

We will need volunteers to help with various aspects of the event including welcome, registration, help desk, photography, set up and tear down, and related tasks. If you would like to help, all registration for volunteers is being handled by the Festival organizers. See website below.

Website to register as a volunteer:

<https://tinyurl.com/3ys4hkeb>

Festival of Homiletics website:

<https://festivalofhomiletics.com>. ■

Guest Preachers

Calvary welcomes **the Rev. Dr. Joy Moore**, Professor of Biblical Preaching at Luther Seminary in St. Paul, Minnesota, to be our preacher at the 11 a.m. service on **Pentecost Sunday, May 19**. Dr. Moore is a presenter at the Festival of Homiletics. She earned a Ph.D. in Practical Theology from Brunel University/London School of Theology in 2007.

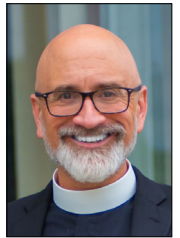


Joy J. Moore, is serving as Visiting Professor of Religion at Huntingdon College in Montgomery, Alabama. An “Ecclesial Storyteller” Dr. Joy seeks to encourage theologi-

cally framed, biblically attentive, and socially compelling interpretations of Christian Scripture to understand contemporary community formation (all that means is she tells community-forming stories from the Bible as a follower of Christ!). An ordained elder in the United Methodist Church, she served as president of the Wesleyan Theological Society from 2020 to 2022. Currently she is working with the Dialogue on Race and Faith Project, developing resources for preaching in an age of contempt. And yes, she is still fascinated by the Marvel Universe!

+++

On **Sunday, April 28** at the 11 a.m. service, Calvary welcomes the Rt. Rev. Matthew Cowden, Bishop of West Virginia, to be our preacher. He was consecrated as Bishop Coadjutor of West Virginia on March 12, 2022, and became Bishop Diocesan on October 14, 2022.



After an early career as a college theater professor, he followed his joy to pursue ordained ministry and received his Master of Divinity degree at Virginia Theological Seminary. Bishop Cowden was ordained deacon and priest in 2006. He served parishes in the Dioceses of Virginia and Northern Indiana. Bishop Cowden is a friend and recent colleague of our former Associate Rector, the Rev. T.J. Freeman. ■



EASTER MONDAY FLOWER DELIVERY – APRIL 1

One of the many traditions at Calvary Episcopal Church is the delivery of the Easter flowers to those for whom prayers were offered during the past year.

This is a one-day volunteer opportunity and only requires that you give time on **Monday, April 1** to deliver the Easter flowers to parishioners. Volunteers are asked to arrive at the Parish Hall between 9–10 a.m. The list of recipients will be sorted by neighborhood and zip code. Kim Pieratt, our Parish Administrator, will prepare the delivery tag which will include the name, address and telephone for each of the recipients. We suggest you call the recipient before leaving the church to let them know you will be delivering an Easter flower to them and ask where you should leave the flower. If you would like to volunteer for this task, please call or email Kim Pieratt by March 25 (kpieratt@calvaryppgh.org or 412.661.0120, ext. 111). If you have any questions, please contact the Rev. Cameron Soulis (csoulis@calvaryppgh.org or 412.661.0120, ext. 123). ■

Children's Faith Formation

Children's Liturgy of the Word at the 11 o'clock Service

Children's Liturgy of the Word

Children's Liturgy of the Word (CLW) is a special time for children to pray, ask questions, and hear the good news of God's love. The Sunday scripture readings are proclaimed and explained on a level appropriate to children ages 4-11. Any child in this age group may participate - no registration is necessary.

Children are invited to gather with adult leaders after the Opening Prayer and process to the Refectory. They return to their families at the time of the Peace. If you are running a little late and miss the beginning of the service, no worries! Drop in and join us in the Refectory.



Calvary NURSERY

Open on Sundays from 8:45 a.m. to 12:30 p.m. and for other church events as published.

Details at <https://www.calvarypg.org/the-nursery>

Staff Spotlight



Juliette and Leyu

major at Carlow University. We are tremendously grateful for their commitment and the positive energy they bring to our nursery!

Thank you to Leyu Belachew and Juliette Guillou, whose dedication and care make the children's nursery a safe and happy place for Calvary's youngest members. In addition to helping in the nursery, Leyu is a chemical engineering major at Carnegie Mellon University while Juliette is advancing her passion for communication as a Speech

Egg Hunt

Bring your basket!

Easter Sunday, March 31,
10:15 to 10:55 a.m.

Children of all ages are invited to find eggs hidden in the Swan Garden and adjoining courtyard. All are welcome!



Our Lenten Journey

Our Faith Formation classes have been reflecting on the importance of Lent, inspired by Jesus' forty-day retreat in the wilderness before starting his public work. We've explored Lent as a time to make space for self-reflection, readiness, and change. The conversations shifted from seeing Lent as merely a time of giving up things to viewing it as an opportunity to deepen our understanding of God's love, which in turn, fosters personal development and change. Activities have included decorating small wooden flower shapes as part of the Calvary Capital Campaign goal-tracking project. The students enjoyed adding color and creative designs to each flower which will be added to the poster as a way to track the number of pledges.

The older students have focused on prayer, including the Our Father and the daily Examen – a prayerful way to review the day to recognize God's presence and movement in our everyday lives. After the discussion, they crafted clay prayer pots, which they filled with glass stones representing different aspects of the Examen to aid in their daily reflection. We look forward to a continued season of meaningful preparation as we anticipate the celebration of Christ's glorious resurrection on Easter Sunday.



Agape Deadline

The deadline for submission of news and notices for the next issue is **Friday, April 5, 2024**. Please e-mail your text to calvary@calvarypg.org or deliver it directly to the church office.

Agape, the newsletter of Calvary Episcopal Church, Pittsburgh, Pennsylvania, is published monthly (except July), and is mailed to active members and friends of the Parish. You may opt out of receiving a printed copy and read each issue online at www.calvarypg.org. Contact the Parish office at 412.661.0120 for details. ■

The Bookstore at Calvary

Anglican Prayer Beads

The Bookstore has a variety of Anglican prayer beads from the company Full Circle Beads. Anglican prayer beads, or the Anglican Rosary, created in the 1980s by an Episcopal priest, Father Lynn Bauman, consist of 33 beads divided into four groups of seven, called weeks, an invitational bead and four cruciform beads. In the Judeo-Christian tradition, the number seven represent spiritual perfection and completion. Between each week, the single cruciform beads form a cross. The invitational bead between the cross and the wheel of beads brings the total number of beads to 33, the number of years in Jesus' earthly life. The symbolism in the Anglican Rosary is unique to the Anglican tradition, as are the prayers.

Prayer beads or rosaries can be traced as far back as the 8th century BCE and can be found in every major religion. All prayer beads have a common purpose as an aid to meditation or contemplation. One can decide how to use them. Enrich personal prayer life. Start a prayer circle. Choose prayers to assign to each bead. Fingering the beads helps one stay focused on the prayers.



The Bookstore has a wide selection of stone beads (such as aquamarine, frosted onyx, and labradorite), as well as wood to choose from. Crafted from high-quality materials, the Anglican prayer beads are both durable and beautiful. Beads are strung on long-lasting nylon-coated microfilament wire. The beads are smooth to the touch, comfortable to hold, and easy to use. Crosses in different styles from Latin to Celtic are available. A pouch to store the beads is provided along with written guidelines for using the prayer beads.

Arrival of New Cards

- A large selection of the popular It Takes Two® cards have arrived and are available including anniversary, birthday, congratulations, loss of a pet, support, sympathy, and thinking of you cards to name just a few.
- As Easter approaches, why not send a friend or loved one an Easter card? With several different Easter cards to choose from, you are sure to find one to give to celebrate Easter.
- Parishioner Laura Everhart has illustrated five views of Calvary in a pack of ten notecards with envelopes. Each set contains two cards depicting five scenes: altar, Calvary Tower, front entrance, quire, and Garden Service. The notecards are blank inside and are available for \$17.50. You can follow Laura on Instagram at @sketchedinstone to see her chronicle some of her drawings and adventures and visit her website at SketchedinStoneArt.com.

Indie Next: Find Your Next Great Read

Stop by the Bookstore to pick-up a free copy of the American Booksellers Association *March 2024 Indie Next List*. This trifold provides inspired book recommendations and a short synopsis of the book from Indie Booksellers

including the #1 pick for the month. Hardcover and paperback titles are listed.

Want a specific book but can't find it? The Bookstore can special order a requested title for you at no charge or order via www.bookshop.org (see below on how to order via Bookshop.org).



Bookshop.org

By ordering books through the Calvary page on Bookshop.org (type zip code 15206 in the Bookstore Near Me box on Bookshop.org, click on Calvary Bookstore, then the red Support this Shop), the Bookstore will receive a portion of the profits. Featured categories include **Lent/Easter** and **Exploring the Church's Teachings**. Here is another way you can support the Bookstore, which is a member of the Episcopal Booksellers Association as well as an independent bookstore, when shopping for books. Bookshop.org will ship your books from their wholesaler's warehouse (usually within 2-3 days) directly to you, handle the customer service, returns and overhead, and the Bookstore at Calvary will receive a small stipend! Help the Bookstore maintain its presence not only as an Episcopal bookstore, but also an independent bookstore with a share of direct-to-home online book sales.



alibris

Alibris is an online store that sells new books, used books, out-of-print books, rare books, and other media through an online network of independent booksellers. Calvary has over 300 mostly out of print, donated books available online at <http://hymnal82.alibrisstore.com>. The collection of offerings includes art, children's fiction, comics, graphic novels, fiction, poetry, and travel to name just a few. Each title listing includes the edition, binding, publisher, date published, description, and condition. Checkout the unique offerings that are reasonably priced.

Volunteer Opportunity

Interested in volunteering, but have a limited amount of time? As little as two hours a month is all it takes for this very worthwhile ministry with training provided. Contact Cindy Pepples at lucindapepples@gmail.com or stop into the Bookstore and ask any staff how you can help.

New Bookstore Hours

The Bookstore is open on Sunday from 8:45 a.m. to 1 p.m. and Wednesday from 11 a.m. to 2 p.m. Call the Bookstore at 412-661-0120 ext. 133 (please leave a message) or email at bookstore@calvarypgh.org and we will contact you. Cash, check, Discover®, MasterCard®, and Visa® along with touch-free payments are accepted. ■

www.calvarypgh.org

EASTER DAY MEMORIALS

If you would like to have your loved ones remembered in the Easter Day bulletin, please fill out this form and return it, with your donation, **no later than Palm Sunday, March 24, 2024.**

Name (as you would like it to appear):

Donor's name: _____

Donor's telephone: (____) _____

Please mail to: Lynda Kennedy
Calvary Episcopal Church
315 Shady Avenue
Pittsburgh, PA 15206-4388



The Church Mouse

Hats off to **Gillian Cannell** who became an American citizen on Leap Day, February 29, 2024! Not surprising that she did the hard work to become a citizen, since she works tirelessly for Calvary serving on Altar Guild,

in the Bookstore, and with the plastics recycling group (just to name a few.) ■

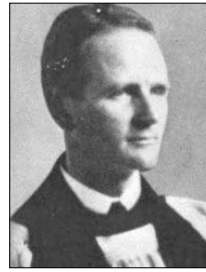


Bishop's Visit to Calvary

Our Bishop, The Right Reverend Dr. Ketlen A. Solak, will visit Calvary on **Sunday, April 7** to preach and preside at the 8, 9, and 11 o'clock services, with Confirmation offered at 11.

Visit the Calvary website at
www.calvarypg.org

Notes From the Calvary Archive



Rev. Van Etten

In "Three Generations: A History of Calvary Episcopal Church 1855-1942," Ernest James Edsall writes about the special sermon the Rev. Edwin Van Etten gave on Easter Sunday, March 31, 1929:

"To illustrate the theme of his address – The return of the soul to God after death – Dr. Van Etten had in his hands in the pulpit a live Homing pigeon, explaining to his hearers the natural instinct of the bird always to return to its home.

After the service, the congregation adjourned to the churchyard where several crates of Homing pigeons were released at a given signal. It was a most inspiring sight to see the birds when freed mount up in the air, circle round three times to get their bearings, and then wing their way back home."

Copies of Edsall's history are in Calvary's archives room. ■



ANNUAL MEETING

The Nominating Committee of the Vestry will receive nominations in the Parlor for Vestry and Parish Council members on Sunday, April 14, 2024 after all services.

The 169th Annual Parish Meeting of Calvary Church will be held on Sunday, May 19, 2024 at 10 a.m., in the Parish Hall

Election of members of the Vestry and Parish Council will take place and reports from the Wardens, Treasurer and others will be given. Please make every effort to attend. ■

Gospel and Breakfast (GAB)

Sundays, 10 – 10:45 a.m., the Evans Room

This class is for young adults and parents of young children to meet for fellowship, light breakfast, and a discussion of the Gospel passage appointed for the day. We gather in the Evans Room on Sundays during the Christian Formation hour (10 – 10:45 a.m.). The nursery will be open at that time, or you can bring your little one(s) along if you prefer. Drop in whenever you can. No prior knowledge needed.

Questions? Please contact the Rev. Cameron Soulis (csoulis@calvarypg.org or 412.661.0120, ext. 123). ■



We will return to Daylight Saving Time at 2 a.m. on Sunday, March 10. When setting your clocks ahead, it is a good time to check the batteries in your smoke and carbon monoxide detectors at home. ■

★ MOVIE NIGHT ★

Join us in the Parish Hall from 7–9 p.m., followed by a brief discussion with Clint Van Dusen.

THE THIRD MIRACLE

Thursday, March 21

Directed by Agnieszka Holland (also renowned for *Europa, Europa*, 1999). 119 min. From the faith of a tiny Gypsy girl who prays to stop Allied planes from bombing her Slovakia (1944) to her migration to a Chicago ghetto (1977), the Catholic Church considers her sainthood. Apostate Father Frank Shore (Ed Harris) – known as a “miracle killer” – is assigned to the case only to fall passionately in love with her daughter (Anne Heche).

Thursday, April 18

The Miracle Worker (1962), Anne Sullivan (Anne Bancroft) confronts the challenge of teaching blind and deaf Helen Keller (Patty Duke) to speak, read Braille and graduate from college. The film is an unforgettable display of physically powerful acting. ■

An expanded version of this issue of *Agape*, with additional content may be viewed on the Calvary website at www.calvarypgh.org

CALVARY

EPISCOPAL CHURCH

315 Shady Avenue ■ Pittsburgh, Pennsylvania 15206
 email: calvary@calvarypgh.org ■ www.calvarypgh.org
 telephone: 412.661.0120

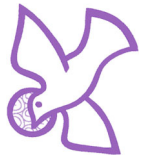
The Rev. Jonathon W. Jensen, *Rector*
 The Rev. Cameron J. Soulis, *Associate Rector*
 The Rev. Geoffrey S. Royce, *Deacon*
 Rabbi Aaron Bisno, *Rabbi-in-Residence*
 Ms. Deanna Briody, *McNulty Intern*
 The Rev. Ruth Bosch Becker, *Assisting Pastor*
 The Rev. Carol Henley, *Assisting Priest*
 Dr. Alan Lewis, *Director of Music*
 Jon Tyillian, *Assistant Organist*
 Lynda Kennedy, *Director of Finance*
 Vicki Rispoli, *Director of Children's Formation*
 Kenneth Smith, *Director of Communications*
 Kim Pieratt, *Parish Administrator*
 Jim Gubash, *Head Sexton*
 Adam Augustine, Ron Johnston, Mary Ann Packer,
 Guy Tillman, *Sextons*
 Vivian Rispoli, *A/V Technician*

Staying in Touch

Please contact Calvary's Parish Administrator Kim Pieratt at the Church office if you have any questions about flower memorials, prayer list additions, or scheduling of events. Kim can be contacted at 412.661.0120, ext. 111 or send an email to kpieratt@calvarypgh.org. We ask that you keep us informed if you have a home address, phone or email change. ■

Holy Baptism

If you, or someone you know, desires to partake in this sacrament, please contact the Reverend Cameron Soulis at csoulis@calvarypgh.org or 412.661.0120, ext. 123 as soon as possible, so that the appropriate preparation and arrangements can be made. ■



Have you remembered
 Calvary in your will?

WEB VERSION



At the Easter Vigil in 2023
Ms. Deanna Briody and the Rev. Cameron Soulis



East Liberty Valley Historical Society

Join us in the Parish Hall at 7 p.m.

Wednesday, April 3

From the Steel City to the White City

In his new book, Zachary Brodt explores Western Pennsylvania's representation at Chicago's Columbian Exposition in 1893, the first major step in demonstrating that Pittsburgh was more than simply America's crucible – it was also a region of developing culture and innovation. This illustrated talk will examine Western Pennsylvania's exhibits at the exposition, as well as the experiences of Pittsburghers visiting the fairgrounds. Zach also will discuss how the Columbian Exposition influenced Pittsburgh's development at the turn of the 20th century. A book signing will follow.

Wednesday, May 1

The Legacy of George Westinghouse

Wednesday, June 5

The Old East Liberty: A Reading by Joseph Bathanti and Linda Schifino





Evening Prayer

6 p.m.

in the Lady Chapel

every

**Monday and Thursday
of Lent**

[February 19 through March 21]

All are welcome

CALVARY EPISCOPAL CHURCH



EASTER
EGG
.... *Hunt*

All are Welcome!
Come and Bring Your Friends!

Easter Day
Sunday, March 31, 2024
@ 10 a.m.

Meet in the Hallway to the Refectory

**Calvary Movie Night:
Thursday, March 21, at 7 p.m.**

**“A
MASTERWORK!
PACKS THE
POWER OF
A GENUINE
REVELATION...
SMART AND
EXCEPTIONALLY
ARTICULATE!”**

—Kevin Thomas,
LOS ANGELES TIMES



**ED HARRIS + ANNE HECHÉ
AND ARMIN MUELLER-STAHLE**

THE THIRD MIRACLE

**A ROMANTIC THRILLER
BY AGNIESZKA HOLLAND**

SONY PICTURES
CLASSICS

**Calvary Movie Night:
Thursday, April 18, at 7 p.m.**

a mighty motion picture experience...touch it
sense it...feel it...**the**...you can't forget it!
**Miracle
worker**



the a flash of intensely personal drama... a brilliant
Miracle bolt of bold motion picture entertainment...a film
worker beyond the usual! starring **ANNE BANCROFT**
and introducing **PATTY DUKE** with VICTOR JORY

ANDREW PRINE, INGA SWENSON, AND KATHLEEN COMEGYS. SCREEN PLAY BY WILLIAM GIBSON BASED UPON HIS STAGE PLAY.
DIRECTED BY ARTHUR PENN. PRODUCED BY FRED COE. MUSIC COMPOSED BY LAURENCE ROSENTHAL. RELEASED THRU UNITED ARTISTS.

Healing with Nature Mosaic Project



This program is designed to respond to the human experience of grief and loss through the healing power of nature and of creative expression.

Community members of all ages will be guided through soulful self-reflections, vehicles for creative expression, and tender encounters with the natural world and with one another.

Mosaic artist, Laura Jean McLaughlin, will guide participants in the collective creation of a community mosaic mural, gathering shattered pieces together to tell a story of community healing and resilience.

Six-week, ten session program
Frick Environmental Center
Saturdays, 1:00pm-3:00pm and
Thursdays, 4:00pm-6:00pm beginning
Saturday April 6th and ending Thursday
May 9th

Attending every session is not
required

Registration required!
Register through link or QR
code below.



1027healingpartnership.org/healing-with-nature-mosaic-project/

for more information please contact:
Susan Spangler
sspanglerlcs@gmail.com 240-285-6507
Ted Cmarada
cmarada@gmail.com 240-446-4937

Organized by JFCS, 10.27 Healing Partnership, Age-Friendly Greater Pittsburgh, Pittsburgh Center for the Arts and Media, Pittsburgh Parks Conservancy, and Lively Pittsburgh.

The program is offered at no cost thanks to the generous support of Pittsburgh's Foundation community. The Pittsburgh Center for Arts and Media Artist Residency Project led by Ceramicist/Teaching Artist Laura Jean McLaughlin is supported in part by the Arts in Education Partnership of the Pennsylvania Council on the Arts, a state agency funded by the Commonwealth of Pennsylvania.

Details at <https://tinyurl.com/mrx3nnp5>

Tuesday Night 2024 Lenten Preaching Series

“Hope – Rooted in Christ”

6 P.M. Dinner • 7 P.M. Holy Eucharist with hymns and sermon

February 20

Calvary Preacher: The Rev. Moni McIntyre
315 Shady Ave. at Walnut, E. Liberty

February 27

St. Thomas Preacher: The Rev. Charles Fischer
378 Delaware Ave, Oakmont

March 5

St. Stephen's Preacher: The Rev. Liddy Barlow
600 Pitt Street, Wilkinsburg

March 12

St. Andrew's Preacher: The Rev. Leslie Reimer
5801 Hampton Street, Highland Park

March 19

Redeemer Preacher: The Rev. Carter Hawley
5700 Forbes Avenue, Squirrel Hill

The Pancake Supper on February 13



Ashes to Go on February 14



Deadline (Friday):

Publication Date (Sunday):

January 5	January 14
February 2	February 11 [Lenten Issue]
March 1	March 10 [Easter Issue]
April 5	April 14 [End of Program Year]
May 3	May 12
June 7	June 16 [Summer Issue]
August 9	August 18 [Beginning of Program Year]
September 6	September 15
October 4	October 13
November 1	November 10 [Advent Issue]
December 6	December 15

2024 CALENDAR

January	February	March	April																																																																																																																																																																																						
<table border="1"> <tr><th>Su</th><th>Mo</th><th>Tu</th><th>We</th><th>Th</th><th>Fr</th><th>Sa</th></tr> <tr><td></td><td>1</td><td>2</td><td>3</td><td>4</td><td>5</td><td>6</td></tr> <tr><td>7</td><td>8</td><td>9</td><td>10</td><td>11</td><td>12</td><td>13</td></tr> <tr><td>14</td><td>15</td><td>16</td><td>17</td><td>18</td><td>19</td><td>20</td></tr> <tr><td>21</td><td>22</td><td>23</td><td>24</td><td>25</td><td>26</td><td>27</td></tr> <tr><td>28</td><td>29</td><td>30</td><td>31</td><td></td><td></td><td></td></tr> </table>	Su	Mo	Tu	We	Th	Fr	Sa		1	2	3	4	5	6	7	8	9	10	11	12	13	14	15	16	17	18	19	20	21	22	23	24	25	26	27	28	29	30	31				<table border="1"> <tr><th>Su</th><th>Mo</th><th>Tu</th><th>We</th><th>Th</th><th>Fr</th><th>Sa</th></tr> <tr><td></td><td></td><td></td><td></td><td>1</td><td>2</td><td>3</td></tr> <tr><td>4</td><td>5</td><td>6</td><td>7</td><td>8</td><td>9</td><td>10</td></tr> <tr><td>11</td><td>12</td><td>13</td><td>14</td><td>15</td><td>16</td><td>17</td></tr> <tr><td>18</td><td>19</td><td>20</td><td>21</td><td>22</td><td>23</td><td>24</td></tr> <tr><td>25</td><td>26</td><td>27</td><td>28</td><td>29</td><td></td><td></td></tr> </table>	Su	Mo	Tu	We	Th	Fr	Sa					1	2	3	4	5	6	7	8	9	10	11	12	13	14	15	16	17	18	19	20	21	22	23	24	25	26	27	28	29			<table border="1"> <tr><th>Su</th><th>Mo</th><th>Tu</th><th>We</th><th>Th</th><th>Fr</th><th>Sa</th></tr> <tr><td></td><td></td><td></td><td></td><td></td><td>1</td><td>2</td></tr> <tr><td>3</td><td>4</td><td>5</td><td>6</td><td>7</td><td>8</td><td>9</td></tr> <tr><td>10</td><td>11</td><td>12</td><td>13</td><td>14</td><td>15</td><td>16</td></tr> <tr><td>17</td><td>18</td><td>19</td><td>20</td><td>21</td><td>22</td><td>23</td></tr> <tr><td>24</td><td>25</td><td>26</td><td>27</td><td>28</td><td>29</td><td>30</td></tr> <tr><td>31</td><td></td><td></td><td></td><td></td><td></td><td></td></tr> </table>	Su	Mo	Tu	We	Th	Fr	Sa						1	2	3	4	5	6	7	8	9	10	11	12	13	14	15	16	17	18	19	20	21	22	23	24	25	26	27	28	29	30	31							<table border="1"> <tr><th>Su</th><th>Mo</th><th>Tu</th><th>We</th><th>Th</th><th>Fr</th><th>Sa</th></tr> <tr><td></td><td>1</td><td>2</td><td>3</td><td>4</td><td>5</td><td>6</td></tr> <tr><td>7</td><td>8</td><td>9</td><td>10</td><td>11</td><td>12</td><td>13</td></tr> <tr><td>14</td><td>15</td><td>16</td><td>17</td><td>18</td><td>19</td><td>20</td></tr> <tr><td>21</td><td>22</td><td>23</td><td>24</td><td>25</td><td>26</td><td>27</td></tr> <tr><td>28</td><td>29</td><td>30</td><td></td><td></td><td></td><td></td></tr> </table>	Su	Mo	Tu	We	Th	Fr	Sa		1	2	3	4	5	6	7	8	9	10	11	12	13	14	15	16	17	18	19	20	21	22	23	24	25	26	27	28	29	30											
Su	Mo	Tu	We	Th	Fr	Sa																																																																																																																																																																																			
	1	2	3	4	5	6																																																																																																																																																																																			
7	8	9	10	11	12	13																																																																																																																																																																																			
14	15	16	17	18	19	20																																																																																																																																																																																			
21	22	23	24	25	26	27																																																																																																																																																																																			
28	29	30	31																																																																																																																																																																																						
Su	Mo	Tu	We	Th	Fr	Sa																																																																																																																																																																																			
				1	2	3																																																																																																																																																																																			
4	5	6	7	8	9	10																																																																																																																																																																																			
11	12	13	14	15	16	17																																																																																																																																																																																			
18	19	20	21	22	23	24																																																																																																																																																																																			
25	26	27	28	29																																																																																																																																																																																					
Su	Mo	Tu	We	Th	Fr	Sa																																																																																																																																																																																			
					1	2																																																																																																																																																																																			
3	4	5	6	7	8	9																																																																																																																																																																																			
10	11	12	13	14	15	16																																																																																																																																																																																			
17	18	19	20	21	22	23																																																																																																																																																																																			
24	25	26	27	28	29	30																																																																																																																																																																																			
31																																																																																																																																																																																									
Su	Mo	Tu	We	Th	Fr	Sa																																																																																																																																																																																			
	1	2	3	4	5	6																																																																																																																																																																																			
7	8	9	10	11	12	13																																																																																																																																																																																			
14	15	16	17	18	19	20																																																																																																																																																																																			
21	22	23	24	25	26	27																																																																																																																																																																																			
28	29	30																																																																																																																																																																																							
May	June	July	August																																																																																																																																																																																						
<table border="1"> <tr><th>Su</th><th>Mo</th><th>Tu</th><th>We</th><th>Th</th><th>Fr</th><th>Sa</th></tr> <tr><td></td><td></td><td></td><td>1</td><td>2</td><td>3</td><td>4</td></tr> <tr><td>5</td><td>6</td><td>7</td><td>8</td><td>9</td><td>10</td><td>11</td></tr> <tr><td>12</td><td>13</td><td>14</td><td>15</td><td>16</td><td>17</td><td>18</td></tr> <tr><td>19</td><td>20</td><td>21</td><td>22</td><td>23</td><td>24</td><td>25</td></tr> <tr><td>26</td><td>27</td><td>28</td><td>29</td><td>30</td><td>31</td><td></td></tr> </table>	Su	Mo	Tu	We	Th	Fr	Sa				1	2	3	4	5	6	7	8	9	10	11	12	13	14	15	16	17	18	19	20	21	22	23	24	25	26	27	28	29	30	31		<table border="1"> <tr><th>Su</th><th>Mo</th><th>Tu</th><th>We</th><th>Th</th><th>Fr</th><th>Sa</th></tr> <tr><td></td><td></td><td></td><td></td><td></td><td></td><td>1</td></tr> <tr><td>2</td><td>3</td><td>4</td><td>5</td><td>6</td><td>7</td><td>8</td></tr> <tr><td>9</td><td>10</td><td>11</td><td>12</td><td>13</td><td>14</td><td>15</td></tr> <tr><td>16</td><td>17</td><td>18</td><td>19</td><td>20</td><td>21</td><td>22</td></tr> <tr><td>23</td><td>24</td><td>25</td><td>26</td><td>27</td><td>28</td><td>29</td></tr> <tr><td>30</td><td></td><td></td><td></td><td></td><td></td><td></td></tr> </table>	Su	Mo	Tu	We	Th	Fr	Sa							1	2	3	4	5	6	7	8	9	10	11	12	13	14	15	16	17	18	19	20	21	22	23	24	25	26	27	28	29	30							<table border="1"> <tr><th>Su</th><th>Mo</th><th>Tu</th><th>We</th><th>Th</th><th>Fr</th><th>Sa</th></tr> <tr><td></td><td>1</td><td>2</td><td>3</td><td>4</td><td>5</td><td>6</td></tr> <tr><td>7</td><td>8</td><td>9</td><td>10</td><td>11</td><td>12</td><td>13</td></tr> <tr><td>14</td><td>15</td><td>16</td><td>17</td><td>18</td><td>19</td><td>20</td></tr> <tr><td>21</td><td>22</td><td>23</td><td>24</td><td>25</td><td>26</td><td>27</td></tr> <tr><td>28</td><td>29</td><td>30</td><td>31</td><td></td><td></td><td></td></tr> </table>	Su	Mo	Tu	We	Th	Fr	Sa		1	2	3	4	5	6	7	8	9	10	11	12	13	14	15	16	17	18	19	20	21	22	23	24	25	26	27	28	29	30	31				<table border="1"> <tr><th>Su</th><th>Mo</th><th>Tu</th><th>We</th><th>Th</th><th>Fr</th><th>Sa</th></tr> <tr><td></td><td></td><td></td><td></td><td></td><td></td><td>1</td></tr> <tr><td>2</td><td>3</td><td>4</td><td>5</td><td>6</td><td>7</td><td>8</td></tr> <tr><td>9</td><td>10</td><td>11</td><td>12</td><td>13</td><td>14</td><td>15</td></tr> <tr><td>16</td><td>17</td><td>18</td><td>19</td><td>20</td><td>21</td><td>22</td></tr> <tr><td>23</td><td>24</td><td>25</td><td>26</td><td>27</td><td>28</td><td>29</td></tr> <tr><td>30</td><td>31</td><td></td><td></td><td></td><td></td><td></td></tr> </table>	Su	Mo	Tu	We	Th	Fr	Sa							1	2	3	4	5	6	7	8	9	10	11	12	13	14	15	16	17	18	19	20	21	22	23	24	25	26	27	28	29	30	31					
Su	Mo	Tu	We	Th	Fr	Sa																																																																																																																																																																																			
			1	2	3	4																																																																																																																																																																																			
5	6	7	8	9	10	11																																																																																																																																																																																			
12	13	14	15	16	17	18																																																																																																																																																																																			
19	20	21	22	23	24	25																																																																																																																																																																																			
26	27	28	29	30	31																																																																																																																																																																																				
Su	Mo	Tu	We	Th	Fr	Sa																																																																																																																																																																																			
						1																																																																																																																																																																																			
2	3	4	5	6	7	8																																																																																																																																																																																			
9	10	11	12	13	14	15																																																																																																																																																																																			
16	17	18	19	20	21	22																																																																																																																																																																																			
23	24	25	26	27	28	29																																																																																																																																																																																			
30																																																																																																																																																																																									
Su	Mo	Tu	We	Th	Fr	Sa																																																																																																																																																																																			
	1	2	3	4	5	6																																																																																																																																																																																			
7	8	9	10	11	12	13																																																																																																																																																																																			
14	15	16	17	18	19	20																																																																																																																																																																																			
21	22	23	24	25	26	27																																																																																																																																																																																			
28	29	30	31																																																																																																																																																																																						
Su	Mo	Tu	We	Th	Fr	Sa																																																																																																																																																																																			
						1																																																																																																																																																																																			
2	3	4	5	6	7	8																																																																																																																																																																																			
9	10	11	12	13	14	15																																																																																																																																																																																			
16	17	18	19	20	21	22																																																																																																																																																																																			
23	24	25	26	27	28	29																																																																																																																																																																																			
30	31																																																																																																																																																																																								
September	October	November	December																																																																																																																																																																																						
<table border="1"> <tr><th>Su</th><th>Mo</th><th>Tu</th><th>We</th><th>Th</th><th>Fr</th><th>Sa</th></tr> <tr><td>1</td><td>2</td><td>3</td><td>4</td><td>5</td><td>6</td><td>7</td></tr> <tr><td>8</td><td>9</td><td>10</td><td>11</td><td>12</td><td>13</td><td>14</td></tr> <tr><td>15</td><td>16</td><td>17</td><td>18</td><td>19</td><td>20</td><td>21</td></tr> <tr><td>22</td><td>23</td><td>24</td><td>25</td><td>26</td><td>27</td><td>28</td></tr> <tr><td>29</td><td>30</td><td></td><td></td><td></td><td></td><td></td></tr> </table>	Su	Mo	Tu	We	Th	Fr	Sa	1	2	3	4	5	6	7	8	9	10	11	12	13	14	15	16	17	18	19	20	21	22	23	24	25	26	27	28	29	30						<table border="1"> <tr><th>Su</th><th>Mo</th><th>Tu</th><th>We</th><th>Th</th><th>Fr</th><th>Sa</th></tr> <tr><td></td><td></td><td></td><td></td><td>1</td><td>2</td><td>3</td></tr> <tr><td>4</td><td>5</td><td>6</td><td>7</td><td>8</td><td>9</td><td>10</td></tr> <tr><td>11</td><td>12</td><td>13</td><td>14</td><td>15</td><td>16</td><td>17</td></tr> <tr><td>18</td><td>19</td><td>20</td><td>21</td><td>22</td><td>23</td><td>24</td></tr> <tr><td>25</td><td>26</td><td>27</td><td>28</td><td>29</td><td>30</td><td>31</td></tr> </table>	Su	Mo	Tu	We	Th	Fr	Sa					1	2	3	4	5	6	7	8	9	10	11	12	13	14	15	16	17	18	19	20	21	22	23	24	25	26	27	28	29	30	31	<table border="1"> <tr><th>Su</th><th>Mo</th><th>Tu</th><th>We</th><th>Th</th><th>Fr</th><th>Sa</th></tr> <tr><td></td><td></td><td></td><td></td><td></td><td>1</td><td>2</td></tr> <tr><td>3</td><td>4</td><td>5</td><td>6</td><td>7</td><td>8</td><td>9</td></tr> <tr><td>10</td><td>11</td><td>12</td><td>13</td><td>14</td><td>15</td><td>16</td></tr> <tr><td>17</td><td>18</td><td>19</td><td>20</td><td>21</td><td>22</td><td>23</td></tr> <tr><td>24</td><td>25</td><td>26</td><td>27</td><td>28</td><td>29</td><td>30</td></tr> </table>	Su	Mo	Tu	We	Th	Fr	Sa						1	2	3	4	5	6	7	8	9	10	11	12	13	14	15	16	17	18	19	20	21	22	23	24	25	26	27	28	29	30	<table border="1"> <tr><th>Su</th><th>Mo</th><th>Tu</th><th>We</th><th>Th</th><th>Fr</th><th>Sa</th></tr> <tr><td>1</td><td>2</td><td>3</td><td>4</td><td>5</td><td>6</td><td>7</td></tr> <tr><td>8</td><td>9</td><td>10</td><td>11</td><td>12</td><td>13</td><td>14</td></tr> <tr><td>15</td><td>16</td><td>17</td><td>18</td><td>19</td><td>20</td><td>21</td></tr> <tr><td>22</td><td>23</td><td>24</td><td>25</td><td>26</td><td>27</td><td>28</td></tr> <tr><td>29</td><td>30</td><td>31</td><td></td><td></td><td></td><td></td></tr> </table>	Su	Mo	Tu	We	Th	Fr	Sa	1	2	3	4	5	6	7	8	9	10	11	12	13	14	15	16	17	18	19	20	21	22	23	24	25	26	27	28	29	30	31																		
Su	Mo	Tu	We	Th	Fr	Sa																																																																																																																																																																																			
1	2	3	4	5	6	7																																																																																																																																																																																			
8	9	10	11	12	13	14																																																																																																																																																																																			
15	16	17	18	19	20	21																																																																																																																																																																																			
22	23	24	25	26	27	28																																																																																																																																																																																			
29	30																																																																																																																																																																																								
Su	Mo	Tu	We	Th	Fr	Sa																																																																																																																																																																																			
				1	2	3																																																																																																																																																																																			
4	5	6	7	8	9	10																																																																																																																																																																																			
11	12	13	14	15	16	17																																																																																																																																																																																			
18	19	20	21	22	23	24																																																																																																																																																																																			
25	26	27	28	29	30	31																																																																																																																																																																																			
Su	Mo	Tu	We	Th	Fr	Sa																																																																																																																																																																																			
					1	2																																																																																																																																																																																			
3	4	5	6	7	8	9																																																																																																																																																																																			
10	11	12	13	14	15	16																																																																																																																																																																																			
17	18	19	20	21	22	23																																																																																																																																																																																			
24	25	26	27	28	29	30																																																																																																																																																																																			
Su	Mo	Tu	We	Th	Fr	Sa																																																																																																																																																																																			
1	2	3	4	5	6	7																																																																																																																																																																																			
8	9	10	11	12	13	14																																																																																																																																																																																			
15	16	17	18	19	20	21																																																																																																																																																																																			
22	23	24	25	26	27	28																																																																																																																																																																																			
29	30	31																																																																																																																																																																																							