

# Agape

The Newsletter of  
Calvary Episcopal Church  
Pittsburgh, Pennsylvania

DECEMBER 11, 2022

## Come Home to Calvary

We invite you to draw near to the presence of God incarnate in our midst in Jesus Christ this Advent and Christmas season. We are returning to the best of Calvary's tradition of celebration as a community after the pandemic.

We will observe the seasons of Christ's arrival with festive music, candlelit services, and a great pageant with our friends from the Tree of Life and the Ethiopian congregation joined by a camel and menagerie of animals and children, all leading up to the announcement of the Incarnation that Christ has come as Emmanuel, God is with us. We will make room for God to dwell both in the cacophonous and the quiet.

Throughout the past few years, it has been understandable to get out of the practice of church together. One can also easily understand feelings of being anxious or angry or disillusioned about one thing after another. The pandemic seems mostly over but its aftershocks will be experienced for years.

All that will still be there. The good news is that God is still God and we still have a mission as community to proclaim and embody putting our faith in action through loving and serving God and our neighbors. More good news is that Calvary is still here stronger than ever.

Come home to Calvary this Christmas and be found in community and meet God in this holy place among the holy people. God is making room for us to dwell in him. In this holy season, you have an invitation to come home and make room for Jesus to dwell in you.

—Jonathon ■



### **Fourth Sunday of Advent - December 18**

***The Holy Eucharist at 8 and 9 a.m. and Holy Eucharist and Pageant at 11 a.m.***

The 11 a.m. service will be livestreamed.

Hanukkah party in the Parish Hall following the 11 a.m. service

### **5 p.m. – Lessons and Carols for Christmas**

The service will be in-person and livestreamed.

### **Christmas Eve - Saturday, December 24**

***The Holy Eucharist at 4 p.m. and 11 p.m., both will be livestreamed.***

Music begins 30 minutes before each service.

Childcare will be provided at 4 p.m.

### **Christmas Day – Sunday, December 25**

***The Holy Eucharist with sermon and Christmas carols at 9:30 a.m. only.***

The service will be in-person and livestreamed.

### **First Sunday after Christmas - January 1**

***Holy Eucharist at 11a.m. only***

The service will be in-person and livestreamed.

**The Clergy, Vestry, and Staff of Calvary Episcopal Church  
wish you a Blessed Advent and Merry Christmas**



## A Priest and a Rabbi Walk into a Classroom

Rabbi Aaron Bisno and the Rev. Jonathon Jensen teach a class together on the parables of Jesus. We will learn together from Jewish and Christian perspectives and how we all might benefit from this wisdom. The classes will be in person in McClintic Hall, also known as the choir room, on **Sundays starting at 10 a.m.** Classes will be held each Sunday through December 18. Sessions will also be recorded and available on Calvary's YouTube page with a link in the Friday email. All are welcome to attend.

### December 11

Talents, Sheep, and Goats [Matthew 25:14-46]

### December 18

The Good Samaritan [Luke 10:25-37]

*Everyone is invited to the Christmas Pageant at 11 a.m. and Hanukkah Party at noon*

The Priest and Rabbi have thoroughly enjoyed leading this class with you on the parables of Jesus. About sixty people have participated in-person each week with more online. We intend to continue teaching together, starting in mid-January. We invite your suggestions for topics for the class. It could be one of the Gospels from Christian and Jewish perspectives, more on the parables, great stories of the Hebrew Bible, or other themes. We welcome your suggestions.

We intend to set aside time to address "Ask a Priest and Rabbi" questions that have arisen. We also invite your questions of ideas you have always wondered about. One example we plan to address is what are our Christian and Jewish beliefs about what happens when you die (heaven and hell) that was suggested by the parable of the Rich Man and Lazarus on November 27. What have you always wanted to ask the Priest and Rabbi? Send questions to [jjensen@calvarypgh.org](mailto:jjensen@calvarypgh.org)

A bit further in the future, we are in the initial stages of planning an interfaith trip to Israel in October (most likely) 2023. Aaron and Jonathon will lead a group of about forty Jews and Christians praying and learning together through the Holy Land. Stay tuned for more information. ■



[www.facebook.com/CalvaryEpiscopalChurch](http://www.facebook.com/CalvaryEpiscopalChurch)



## Back to the Sources

Wednesday, December 21 @ 12:30 – 2 p.m.,  
Brown Bag Lunch, in the Evans Room

Rabbi-in-Residence Aaron Bisno will take us on a tour of Jewish Sacred Literature. Together we will explore the Jewish Bible/Old Testament including the Hebrew Prophets and Psalms; the Talmud and Wisdom Literature, Ancient and Contemporary Midrash and Poetry, as well as the Jewish Prayerbook. No prior experience or knowledge of Judaism is necessary, but please bring a Bible if you have one and invite a friend or two, as well. ■



## Brown Bag Monastery

The Brown Bag Monastery is off to a good start. Several readers have come forward to read aloud from great literature in the Nave/Church. We would always welcome more interested readers. If you feel able to read aloud for 20-30 minutes or a bit longer while seated, please contact Deacon Geoffrey Royce at [groyce@calvarypgh.org](mailto:groyce@calvarypgh.org)

**Join us in the Nave at Calvary at noon on Tuesdays for public readings from great literature**

### Upcoming Readings

**December 13:** *Tales from Shakespeare* by Charles and Mary Lamb.

**December 20:** *The Greater Trumps* by Charles Williams read by Gillian Cannell

*(No Reading on December 27)*

**January 3:** A Selection from William Faulkner's *Go Down Moses*

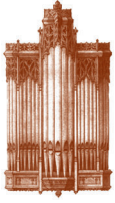
**January 10:** Selections from Guy De Maupassant's *The Wandering Life and Others*

**January 17:** Fyodor Dostoyevsky's *The Grand Inquisitor*

**January 24:** Edgar Allen Poe's *The Purloined Letter* ■

**MERRY CHRISTMAS**

## MUSICAL NOTES by Alan Lewis



*What sweeter music can we bring  
than a carol, for to sing  
the birth of this, our heavenly King?  
Awake the voice! awake the string!*

—Robert Herrick

There's nothing quite like singing carols for getting us into a receptive frame of mind to receive again the incomprehensible gift of God's own Self at Christmas. The deep well of personal and collective memory they can tap into is a powerful emotional resource. And surely carols constitute a strong part of the popularity of this particular occasion, out of all Christian holy-days. (Well, there are also the presents...)

The carol originated long ago, in fourteenth-century England. Carols were not yet specifically tied to Christmas, but reflected other seasons and subject matters, as well. They were, above all, a folk-genre, a form of music transmitted mostly orally, rather than in writing, and usually with no known composer. They often had strong local, geographical roots – which is why so many carols are known by place-names (the Sussex Carol, the Wessex Carol, and the like). From these humble origins, carols largely stayed underground, subsisting orally until the nineteenth century, when a number of collections documenting them appeared in print.

These collections coincided with (and were to some degree prompted by) the appropriation of carols into the Church – an absorption that was highly successful with regard to Christmas, but less so for other seasonal observances (Easter carols, for instance, were not a big hit). From these native origins, the nineteenth-century English history of the carol branched out to absorb Christmas-themed songs from the folk traditions of other nations, broadening and deepening the repertoire. And as successive generations of “contemporary” composers got their hands on these texts and tunes, new arrangements, from the simple to the dazzling, emerged, challenging and sometimes delighting choirs and congregations alike.

It is particularly interesting to me that so much of the seemingly age-old body of carols was actually introduced as new and unfamiliar music. Essentially none of what we think of as age-old carols was widely known even two hundred years ago. This gives me hope that, in turn, some things that seem new to us will one day be as familiar as, well, Silent Night. (And remember, that carol was invented out of whole cloth in 1818, when an organ break-down in the German village of Obendorf compelled its tiny parish to find something to sing with guitar accompaniment!)

Perhaps the most widespread experience of carols in the modern world is the King's College Service of Lessons and Carols, broadcast live on Christmas Eve, and airing at 10 a.m. local time on WQED, 89.3 FM, or via the Minnesota

Public Radio website ([www.mpr.org](http://www.mpr.org)). It is also typically rebroadcast on Christmas Day. Whenever and however one hears it, it is a wonderful way to connect with both the story of Christmas and the wonderful range of music that adorns it – and to do so with a remarkable breadth of humanity around the globe. (And we now have a close parochial family connection to that event, since the director of the King's College Choir, Daniel Hyde, is the son-in-law of our Associate Rector, Cameron Soulis, and her husband Michael Salmon!)

But I think that it is important not merely to hear carols, but to sing them: to draw in breath (a word that is, in Hebrew, the same word as Spirit), and to transform that breath into song by the incredible human alchemy of singing. “Oh, but I can't sing” is no excuse: so few opportunities to sing aloud and in groups come up in our culture that it's scarcely a wonder we might feel out of practice! I'd urge you to take a chance, this Christmas, and let your voice join in on the carols we sing together. What sweeter music, after all, can we bring? ■

---

## Holy Baptism

If you, or someone you know, desires to partake in this sacrament, please contact the Reverend Neil Raman at [nraman@calvarypgh.org](mailto:nraman@calvarypgh.org) or 412.661.0120, ext. 112) as soon as possible, so that the appropriate preparation and arrangements can be made. ■

---

## Calvary Movie Nights

*Third Thursdays in the Parish Hall at 7 p.m.*

**February 16: Extremely Loud and Incredibly Close.** A son loses his father (Tom Hanks) in the World Trade Centers bombing on 9/11.



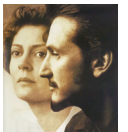
**March 16: To Kill a Mockingbird**

Harper Lee's classic novel becomes a film starring Gregory Peck as a defense attorney who defends a black farmer.

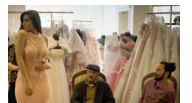


**April 20: Dead Man Walking.**

Susan Sarandon stars as Sister Helene Prejean still fighting capital punishment from Louisiana. Sean Penn plays the felon.



**May 18: WAJIB.** An Arab Christian father and son handle one another with cranky bickering as the daughter-sister prepares for her wedding. ■



---

## Please Note

The Church and offices will be closed on Monday, December 26 and Tuesday, December 27, 2022 and Monday, January 2, 2023. ■

# The Bookstore at Calvary

Get your holiday cards at the Bookstore with Christmas cards displaying the beauty of Calvary Episcopal Church. There are two sets, Volume 1 and Volume 2, with each package consisting of seven different cards with matching envelopes for \$10. Each card is imprinted with a Christmas verse and greeting. They are a project of the Architectural History Committee.

The Bookstore has many items to celebrate Advent including a variety of nativities from around the world, Advent wreaths and candle sets, calendars and daily planners for 2023, decorations for the wall and shelf, music CDs, ornaments, and pins. There is an assortment of Advent calendars for children of all ages, including pictures and Bible text, pictures and the Nativity Story, stickers, and many others. In addition, there is a wide selection of books to celebrate the Christmas season for readers of all ages including:

**Light Upon Light: A Literary Guide to Prayer for Advent, Christmas, and Epiphany** compiled by Sarah Arthur contains daily and weekly inspirational reading to help the reader prayerfully experience God through the liturgical seasons of winter.

Celebrated author and Benedictine monk Anselm Grün offers a daily reader of very simple and often direct Advent reflections in **Your Light Gives Us Hope: 24 Daily Practices for Advent**.

We don't like to wait, but the season of Advent is all about waiting--a time of expectation, when Christians have traditionally devoted themselves to practices of prayer and study. **Expectant: Advent Meditations** by Anne E. Kitch offers a short meditation for each of the thirty days of the season, from the First Sunday of Advent through Christmas Day.

**Light of the World: A Beginner's Guide to Advent** by author, professor, and biblical scholar Amy-Jill Levine explores the biblical texts surrounding the story of the birth of Jesus. Join her as she traces the Christmas narrative through the stories of Zechariah and Elizabeth, Mary, the journey to Bethlehem, and the visit from the Magi. These stories open conversations around connections of the Gospel stories to the Old Testament, the role of women in first-century Jewish culture, the importance of Mary's visitation and the revolutionary implications of Mary's Magnificat, the census and the stable, and the star of Bethlehem and the flight to Egypt.

Episcopal priest Kate Moorehead invites us to enter the story of salvation with our hearts and minds wide open, experiencing the miracle of Jesus through the eyes of witnesses in **I Witness: Living Inside the Stories of Advent & Christmas**.

Fleming Rutledge explores Advent as a time of rich paradoxes, a season celebrating at once Christ's incarnation and his

second coming, and she masterfully unfolds the ethical and future-oriented significance of Advent for the church in **Advent: The Once and Future Coming of Jesus Christ**.

Grown-up literary tastes can find the spirit of the season and originality in format with Robert Sabuda's stylized paper engineering as the author recalls **The Christmas Story**. This celebration of the Nativity story is a pop-up book constructed almost entirely from plain white paper with gold accents.

For generations, readers have found in the writings of Evelyn Underhill the guidance to help them deepen their own interior lives in the Christian mystical tradition. In **Advent with Evelyn Underhill**, Anglican author and editor Christopher Webber has carefully selected inspirational passages from Underhill's most significant works, providing readings for every day of Advent and Christmas.

## Show your support of the independent bookstore via Bookshop.org

Here is now another way you can support the Bookstore, which is a member of the Episcopal Booksellers Association as well as an independent bookstore, when shopping for books. As an alternative to Amazon, go to [www.bookshop.org](http://www.bookshop.org), which gives independent bookstores tools to compete online and financial support to help them maintain their presence in local communities. On the home page in the upper right corner, click Choose a Bookstore, then type in zip code 15206 and pick Calvary Bookstore. Bookshop.org will ship your books from their wholesaler's warehouse (usually within 2-3 days) directly to you, handle the customer service, returns and overhead, and the Bookstore at Calvary will receive a small stipend! Help the Bookstore maintain its presence not only as an Episcopal bookstore, but also an independent bookstore with a share of direct-to-home online book sales.

## Alibris

Alibris is an online store that sells new books, used books, out-of-print books, rare books, and other media through an online network of independent booksellers. Calvary has over 300 mostly out of print, donated books available online at <http://hymnal82.alibrisstore.com>. The collection of offerings includes art, children's fiction, comics, graphic novels, fiction, poetry, and travel to name just a few. Each title listing includes the edition, binding, publisher, date published, description, and condition. Check out the unique offerings that are reasonably priced.

## Calvary website link to The Bookstore at Calvary

Go to [www.calvarypgh.org](http://www.calvarypgh.org) and click on The Bookstore at Calvary located in the upper right corner or go directly to the site at [www.calvarypgh.org/the-bookstore-at-calvary](http://www.calvarypgh.org/the-bookstore-at-calvary). You will find a monthly newsletter along with pictures of featured items available. Be sure to mark the website as one of your favorites!

*The Bookstore is open on Sundays  
from 8:45 a.m. to 1 p.m. ■*



## Passages

In November, the Rector and Rabbi-in-Residence met for two hours with twenty college students who are part of an organization called Passages. They introduce young Christians to their Jewish roots, help them learn about Anti-Semitism, and deepen their own faith. The capstone project is a trip to Israel. The group first came to Pittsburgh last year to learn about the attack on 10/27 and the Anti-Semitism that caused it and how the community responded. They take the lessons they learn to become leaders in their own communities throughout the US. Several local, Jewish organizations urged them to visit Calvary in 2021 and 2022. For details on the organization, please visit [www.passagesisrael.org/about-us/](http://www.passagesisrael.org/about-us/) ■



## East Liberty Valley Historical Society

### Marilyn Evert Memorial Lecture Series Fall 2022

Talks in the Marilyn Evert Lecture Series are held monthly on Wednesdays at 7 p.m. in the Parish Hall of Calvary Episcopal Church. The free series is named for its late founder, anthropologist and art historian Marilyn Evert. Free parking is available in the church lot. Each talk will be followed by a Q&A session and book sale.

#### Wednesday, January 4, 2023 – East Liberty: A Reading

East Liberty native Joseph Bathanti will read from and discuss his 2001 coming-of-age novel “East Liberty,” set between 1955 and 1963 and drawn from his childhood experiences. ■

Please remember Calvary Church  
in your will.

## Many Thanks!

Pittsburgh Lincoln School thanked the Women of Calvary and Calvary parishioners for their donation of \$1,225 collected in the “Pack-to-School” program. Read the ‘Thank You’ letter posted to the online version of this issue.

Also, 11 of the students in the Calvary Lincoln After School Program are receiving Honor Roll awards for their work this semester! If you would like to help with the CLASP program, please contact Kitsy McNulty. ■

## Spiritual Reflection – Ross Gay



Adult spiritual formation may be described as the step-by-step discovery of God’s presence in our lives and our personal transformation along the way. Calvary’s Spiritual Reflection meetings continue to be a regular and familiar forum for small group peer ministry.

For this term we are using Ross Gay, author of four books of poetry and short essays. Our group will use *The Book of Delights*, a New York Times bestselling book of essays celebrating ordinary delights in the world around us. You may want to check out an interview about the book in a February 2020 episode of NPR’s *Living on Earth*.

Meetings are held in the Evans Room from 7–8 p.m. on the first and third Tuesday evening of each month. The meetings are hybrid, allowing “in person” conversation while using Zoom so others can join remotely. Our next meeting is on December 20. Email Matt Muldoon ([mattmuldoon@msn.com](mailto:mattmuldoon@msn.com)) or Sondra Krimmel ([sskrimmel@gmail.com](mailto:sskrimmel@gmail.com)) for information or to be added to the email list. Please feel welcome to join at any time. ■

## Nourishment for New Families



Adding a new member to a family brings many challenges. Something like getting a simple meal on the table can suddenly take two or three times as long when you’re constantly being pulled away for childcare. In light of this, we are looking to add to our list of parishioners who would be interested in periodically providing a meal for families with new children. When a family adds a new member, we will send a notice to the group of parishioners with an opportunity to sign up for a specific day to deliver a meal.

If you are interested in joining the distribution list for providing meals or if you’re anticipating adding a new family member soon, please contact Shannon O’Brien at 612.670.1082 or [shannonwarchol@gmail.com](mailto:shannonwarchol@gmail.com) ■

# CHILDREN'S FAITH FORMATION



Calvary's Annual Christmas Pageant will be held during the 11 o'clock service on Sunday, December 18.

Live nativity animals will join us again this year! If you are interested in participating and/or would like to help, please sign up on the Calvary website. Contact Vicki at [vrispoli@calvarypg.org](mailto:vrispoli@calvarypg.org) if you have any questions.



## A Holiday Reminder

We joyfully welcome children and their parents to worship at Calvary! The presence of young ones is a gift to the Church. They are vital members of our parish community here at Calvary and a continual reminder that our parish is growing and thriving. Please welcome our children and give a smile of encouragement to the parents.

## Faith Formation Highlights

Our Faith Formation students have enjoyed celebrating Advent and the new liturgical year. After lighting the first candle of the advent wreath, we reflected on the words of Isaiah. The prophet's message is a reminder that God has a wonderful gift for us; God loves us and wants to be with us, and God is coming here. Wonderful news, indeed! Students also enjoyed creating colorful votives as a reminder of this Season of Light.



Level III students continued the discussion of individual gifts and our special role in God's plan. Later, we headed to the kitchen, where we made a steamy pot of chicken soup along with a batch of biscuits. The soup will be used for the Soup Group Ministry. Thank you, Miss Adele, for helping with this delicious project, perfect for a cold Sunday morning!

## The Gift of Silence

We live in a noisy world filled with so many sounds that can drain us emotionally and spiritually. Many of us rarely have the opportunity to experience silence or to savor the quieter sounds of nature around us, especially during the busy holiday season!

What you can do at home:

- Notice your speaking voice and allow for time to speak to your children in a quiet manner. Even if your child responds in a loud voice, simply make your own voice quieter. Your child will eventually realize the volume of your voice. We can model for them how to be silent.
- Turn off the television when nobody is watching it. Avoid using it as a background noise filler, especially when you are eating as a family or when your children are doing homework.
- Offer earplugs or noise-reducing headphones to your children if they're bothered by noise or just need to tune out sounds.
- Set aside a specific time for quiet, such as right after school and before they jump into homework or extra-curricular activities.
- Go for a family nature walk to quietly enjoy the surrounding beauty. Challenge your children to be quiet so they can hear all the natural sounds around them, such as the rustling of leaves and birds chirping.
- Create a quiet zone in your home where your children can go when they feel like they need silence. This can be a floor pillow in the corner of their playroom or bedroom where there are some books and stuffed animals to comfort them as they recharge.

More about helping children find God in Quiet Spaces at [contemplativeathome.com/finding-god-in-quiet-places/](http://contemplativeathome.com/finding-god-in-quiet-places/) ■



Happy Holidays to all!

Our teams at Beginnings are well into their Love, Lights, and Celebrations units. We are learning answers to these questions: What is a celebration? What do our families celebrate? When do we celebrate? How do we celebrate?

The Blue Team students believe that celebrations are special times when we gather with family and friends, hug and kiss, give/receive gifts, sing, dance, play music, read books, decorate, and make muffins, pies, and cookies. One day they experienced the joy of gift-giving by baking chocolate chip cookies with sprinkles, making cards for each team, decorating baskets with holiday tissue paper, counting out



cookies and candies for the students and teachers, and delivering them while playing instruments and caroling throughout the halls of Beginnings. Even a parent commented that their child was singing “We wish you a Merry Christmas” that evening.

Faith Night (Skate Night) at the Hunt Armory was enjoyed by many of our Beginnings families again this year. Ms. Hanna and Ms. Joniesha (Yellow and Purple Team teachers pictured with me) especially enjoyed the event as it was their first time to ice skate. Even our youngest student seemed to have fun with his mother and sister (pictured) even though he was too small to skate on his own. It was also exciting to see several alumni families representing other churches in our community at the event.

Beginnings’ “Pajama, Pizza, and Movie Night” was held in the Parish Hall. With lots of room to spread out and an extra-large projection screen and speaker system, our families safely enjoyed watching several of most everyone’s favorite animated Christmas movies. Considering the amazing turnout, we will definitely make this an annual event.

Our Holiday Program will be held in person in the nave on December 15 at 11:30 a.m., followed by a visit from Santa and a potluck luncheon. Winter Break will begin after the event and Beginnings will reopen on January 2, when all teams will begin their Winter-themed units.

I am thrilled to share that Calvary will resume in-person ESL classes starting January 10, from 9:30 – 11 a.m. Many of our Beginnings families will participate in English conversation after dropping off their children on Tuesday mornings. If you have friends or families who may be interested, please have them contact me for details.

–Tammy Lewis, Director ■

## With Gratitude...

To the diehards who work diligently caring for the church gardens week after week between mid-March and late November. Potting, watering, weeding, pruning, and feeding – examples of their efforts. So, thanks to Charlie Atwood, Ruthanne Bauerle, Mike Broome, Nancy Carpenter, Catherine Davidson, Bob Dilts, Lauren Ernst, Bill Gentz, Dan Geroni, Donna Hallen, Judy Kennedy, and Joanne Luchsinger. Three others have shown interest.

Workers show up on Saturday mornings when they have time. Should you want to join us next Spring, when you see the announcement for Easter memorials, that’s the time to contact Nancy Carpenter or Bob Dilts or any one of those named above. Or do it now, so you don’t forget.

Blessings! ■



**Support  
The Women  
of Calvary**

We're fundraising with **Sarris**  
CANDIES

**HELP SUPPORT OUR  
FUNDRAISING SALE**

*and make your holidays even sweeter!*

[www.calvarypgh.org](http://www.calvarypgh.org)

## Meet Our New Sexton

Eric Walker is our new sexton who started at the end of October. He was welcomed by joining us at one of the busiest times of the year during set up for the Calvary Bazaar.

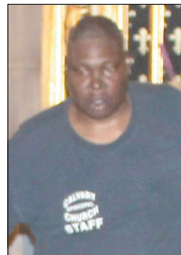


Eric is a native Pittsburgher who was graduated from Westinghouse High and lives in Squirrel Hill. When he is not at Calvary, he loves playing all sports including basketball, football, tennis, and soccer. He also loves to watch movies and spend time with his girlfriend who is a teacher at Beginnings Pre-School.

He has quickly endeared himself to the Calvary staff and regular volunteers being willing and able to help. He is kind, hard-working, level-headed, smart, conscientious, and loves meeting new people. Because there are so many of us to meet at once, please do introduce yourself to him. He is full-time and succeeds our beloved James Knight who has been introducing him to the ways of Calvary. ■

## James Knight "Purse"

Our faithful and beloved sexton, James, retires from Calvary at the end of January after 41 years. To honor and thank him, we are collecting a financial gift, often called a purse, to present to him on his final Sunday of January 29. All are invited to a festive reception on that day at noon.



If you would like to make a financial donation to James's gift, please give a check to Calvary Church with a note for "James Purse." Thank you for your generosity. ■

## Agape Deadline

The deadline for submission of news and notices for the next issue is **Friday, January 6, 2023**. Please e-mail your text to [calvary@calvarypgh.org](mailto:calvary@calvarypgh.org) or deliver it directly to the church office.

*Agape*, the newsletter of Calvary Episcopal Church, Pittsburgh, Pennsylvania, is published monthly (except July), and is mailed to active members and friends of the Parish. You may opt out of receiving a printed copy and read each issue online at [www.calvarypgh.org](http://www.calvarypgh.org). Contact the Parish office at 412.661.0120 for details. ■

Have you returned your  
2023 Pledge Card?

## Christmas Memorials

If you would like to have your loved ones remembered in the Christmas Eve Order of Service, please fill out this form and return it, with your donation, by **Friday, December 16, 2022**.

Name (as you would like it to appear): *please print*

Donor's name: \_\_\_\_\_

Donor's telephone: \_\_\_\_\_

Please return this form to the Church office

or mail to: Lynda Kennedy

Calvary Episcopal Church,

315 Shady Ave., Pittsburgh, PA 15206

You may also email Kim Pieratt at [kpieratt@calvarypgh.org](mailto:kpieratt@calvarypgh.org) with your information, and then mail your donation to the church office. ■



## Mmmm Good! Soup Group News

The Soup Group will be cooking on **January 6 and 20, 2023 starting at 9 a.m.** in Calvary's kitchen. We welcome cooks and recipes at any time. We'll be making some soups for our annual Souper Bowl Sale on February 12. We encourage soup deliveries to fellow Calvary members, friends, and family members. Please contact me if you have any questions. Thank you.

—Adele Eley, [adele.eley@gmail.com](mailto:adele.eley@gmail.com)  
412.371.6921 (home); 412.719.9637 (cell) ■

Save the Date

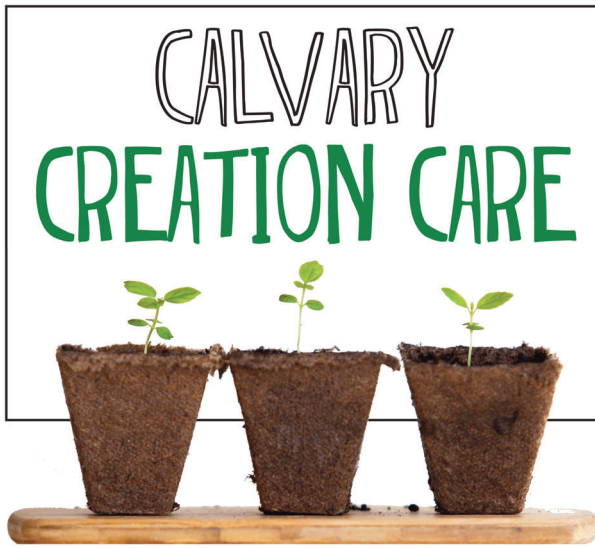
## Shrove Tuesday Pancake Supper

Tuesday, February 21, 2023  
from 6 to 7:30 p.m.

Full details  
will be announced ■







## Introducing Calvary Creation Care (CCC)

Creation Care, Environmental Protection, Energy Saving – we all have concerns in these areas, and many of us would like to learn more about the major concerns, share ideas, and find things to do together to make a difference. These topics give us opportunities to get together more as a congregation, grow spiritually, and feel closer to God through caring for God’s world.

For more insights, go to <https://www.episcopalchurch.org/ministries/creation-care/>.

Please join us on **January 8 at 10 a.m.** for an interactive theological reflection on “Creation, Conversation, and Calvary.” The session will be facilitated by Wendy Lomicka in McClintic Hall.

### What We Can Do Through CCC

Calvary has achieved a lot in terms of energy conservation and recycling. But there is always more to do as faithful stewards of the Earth.

CCC will be planning a number of events this spring:

- MLK Day of Service
- Spring tree planting
- Vacant lot clean-up
- Sunday morning

### We Also Hope to Do

- Nature walks
- Outdoor Eucharist
- Adopting a green space

If you have ideas, groups you are involved with, or anything else, please contact

Catherine Davidson, [cmd402@gmail.com](mailto:cmd402@gmail.com);  
Tom Slater, [patobyblack@yahoo.com](mailto:patobyblack@yahoo.com);  
Wendy Lomicka, [wenlom@gmail.com](mailto:wenlom@gmail.com);  
Ray Richter, [alcastrr@gmail.com](mailto:alcastrr@gmail.com); or  
Laura Everhart, [lauraelizabetheverhart@gmail.com](mailto:lauraelizabetheverhart@gmail.com).) ■

# Lessons & Carols For Christmas

December 18, 5 p.m.

Scriptural and musical meditations on the coming of Christ,  
with beloved carols for all to sing



## Foyer Group Update

Last fall, about 80 Calvary folks signed up to be part of a Foyer Group – when 8-12 of us get together for a meal in someone's home for a purely social evening. Foyer Groups are an old Calvary tradition that had taken a hiatus for a few years, and reviving it seemed like a way to shake off the enforced isolation of the pandemic years, meet new people and enrich our ties with one another. All the new groups have now met at least once, and reports indicate much good conversation, delicious food, and abundant laughter. We look forward to more enjoyable get togethers this spring. (There may be a few places for more people in the new year, so let one of us know if you are interested!)

Kathy Ayres ([Kayres@chatham.edu](mailto:Kayres@chatham.edu))

Russ Ayres ([rwayresiii@gmail.com](mailto:rwayresiii@gmail.com))

Catherine Davidson ([cmd402@gmail.com](mailto:cmd402@gmail.com))

Adam Hallowell ([adam.hallowell@gmail.com](mailto:adam.hallowell@gmail.com)) ■



SAVE THE DATE

# CHILI FEST

Saturday, January 28, 2023

Details coming soon... ■



## Skating at the Hunt Armory

The Pittsburgh Penguins have partnered with the city to redevelop the Hunt Armory (on Emerson Street between Walnut and Alder Streets) into a community resource of an ice-skating rink for the winter. Calvary has also become a partner by sharing our parking lot that provides both income for our ministries as well as enables the Penguins to serve disadvantaged youth through their programming.

Some of their programs are open to the public including:

### Learn to Skate

Weekly introductory program that teaches the basic skills of ice skating. This program is open to children ages 4-10 years old, looking to develop a strong skating foundation in small class sizes with Learn to Skate USA certified coaches.

Please note that these classes are currently full, although participants can join the waitlist. We will be having new learn to skate classes early in the new year. Registration for these classes have not yet opened up. We are hoping to open registration in the next month or so.

### Learn to Play

Little Penguins Learn to Play Hockey is an introductory program for children ages 5 to 10 to learn the basic skills of ice hockey. The program provides first-time participants with full hockey equipment and weekly appropriate on-ice instruction from certified coaches in a fun and safe atmosphere. It is strongly recommended that children complete a Learn to Skate program prior.

This program will start early in the new year. Registration for this will program will likely open up early December.

### Try Hockey for Free

Try Hockey for Free, presented by U.S. Steel is a 1-hour clinic available to children ages 4 to 9 who wish to give the sport of hockey a try with no cost or commitment. No prior skating and/or hockey experience is required for participation. Equipment will be provided for each participant.

There is public skating available for all ages on Fridays, Saturdays and Sundays from 3:30 – 5:30 p.m.

You can find all of the information and further details on the website: <https://www.nhl.com/penguins/community/hunt-armory-rink> ■

[www.calvarypgh.org](http://www.calvarypgh.org)



## Tree of Life Hanukkah Party

Join us as the Tree of Life congregation shares a Hanukkah celebration at Calvary on **Sunday, December 18 after the 11 o'clock service**. The celebration will include singing, food, crafts, menorah lighting, latkes, and jelly donuts.

That morning, Tree of Life members will join us for our Christmas pageant at the 11 a.m. service with Rabbi Myers again playing the role of Moses and their Board President, Alan Hausman, playing a wise man. We will also have members of the Ethiopian Orthodox congregation joining in the pageant. After we all share in the Christmas pageant we will all share in the Hanukkah party. All are welcome. ■

---

## CALVARY YOUNG ADULT MINISTRY

If you are in your 20s or 30s and new to Pittsburgh, Calvary, or CYAM, welcome! For more information, or to be added to our email list, please contact The Rev. Cameron Soulis at [csoulis@calvarypgh.org](mailto:csoulis@calvarypgh.org) / 412.661.0120 ext. 123. ■

---

An expanded version of this issue of *Agape*, with additional content may be viewed on the Calvary website at [www.calvarypgh.org](http://www.calvarypgh.org)

---

# CALVARY

EPISCOPAL CHURCH

315 Shady Avenue ■ Pittsburgh, Pennsylvania 15206  
 email: [calvary@calvarypgh.org](mailto:calvary@calvarypgh.org) ■ [www.calvarypgh.org](http://www.calvarypgh.org)  
 telephone: 412.661.0120

The Rev. Jonathon W. Jensen, *Rector*  
 The Rev. Neil K. Raman, *Senior Associate Rector*  
 The Rev. Cameron J. Soulis, *Associate Rector*  
 The Rev. Ruth Bosch Becker, *Assisting Pastor*  
 The Rev. Carol Henley, *Assisting Priest*  
 The Rev. Geoffrey S. Royce, *Deacon*  
 Rabbi Aaron Bisno, *Rabbi-in-Residence*  
 Ms. Deanna Briody, *McNulty Intern*  
 Dr. Alan Lewis, *Director of Music*  
 Jon Tyillian, *Assistant Organist*

*The Women of Calvary*



*Sarris*<sup>®</sup>  
CANDIES

*Christmas 2022*



© Copyright 2022. Sarris Candies, Inc. All Rights Reserved.

## *Online Ordering*

**1**

Share our Group ID# and direct your family & friends to go online to [SarrisCandiesFundraising.com](http://SarrisCandiesFundraising.com)

**2**

For every purchase made online, our group will earn huge profit!

**3**

Items will be shipped directly to your family & friends.

**OUR GROUP ID#**

**10-3596**

SCAN ME 





*Office of the President*

December 1, 2022

The Rev. Jonathon Jensen  
315 Shady Ave  
Pittsburgh, PA 15206

Dear Jonathon,

On behalf of the Pittsburgh Theological Seminary community, I write to offer my sincere thanks to you and your congregation for participating in our contribution toward the Amen to Action initiative preparing of meals on Saturday, November 12, 2022.

You and our neighbors here in the East End of Pittsburgh put together 100,000 meals for the Greater Pittsburgh Community Foodbank. I referred to our collective work as a modern miracle. A miracle that you and your community were part of making. We not only fed our community, we also worked together to accomplish this task; no small feat in Pittsburgh.

We are grateful for your support in showing up and for your financial gifts to make this possible. Thank you for believing in us at PTS, and in one another to accomplish this great work. Your congregation made a substantial financial contribution to this project for which we are deeply grateful. .

When I arrived at Pittsburgh Theological Seminary, 18 months ago, I spoke to you about my vision. I believe PTS is called to be a neighborhood seminary engaged in a global mission. Your presence on November 12, affirmed the importance of that vision and I am grateful for your support of that vision. This will not be our last time to work together but only the first of many opportunities for us to come together in unity.

Please do not hesitate to contact me should you have works of ministry that the Seminary could be a partner with you in the future or ideas of other works that we can do with our East End ministry neighbors.

Have a Blessed Advent Season,

Rev. Dr. Asa Lee  
President

616 North Highland Ave.  
Pittsburgh, PA 15206  
Phone: 412-924-1366  
Fax: 412-924-1766  
E-mail: [alee@pts.edu](mailto:alee@pts.edu)

  
**Expect  
great  
things.**

 Pittsburgh  
Public Schools



**Pittsburgh  
Lincoln PreK-5**  
A Technology and  
Pre-Engineering Academy with  
STEAM Emphasis

---

**Pamela Parks, Principal**  
328 Lincoln Ave.  
Pittsburgh, PA 15206

**Stay Connected & Informed:**

Website:  
<http://discoverpps.org/Lincoln>

Facebook: Pittsburgh Lincoln  
STEAM Academy PreK-5



Twitter: @pghlincolnsteam



Instagram: @pghlincolnsteam



---

Phone: 412-529-3980  
Fax: 412-666-4959

---

Parent Hotline:  
412-529-HELP (4357)  
[discoverpps.org/lincoln](http://discoverpps.org/lincoln)

---

October 21, 2022

Dear Women of Calvary and Calvary Episcopal Church parishioners,

On behalf of Pittsburgh Lincoln staff and students, I would like to extend a heartfelt thank you for your donation in the amount of \$1,225.00, through the "Pack to School" project. Your acknowledging our need of your prayers and continued support for our students means the world to us.

This donation will go a long way in supporting the student here at Lincoln. The continued support and partnership of Calvary Episcopal Church has been a much appreciated and needed here at Lincoln. We can't thank you enough for being the epitome of what it means to be a true community partner.

Respectfully submitted,

*Pamela Parks*

Pamela Parks

**SUNDAY, DECEMBER 18, 2022**



**חג חנוכה שמח!**

**HANUKKAH**  
**PARTY**

**Join us in the Parish Hall  
after the 11 o'clock service**

# The Annual Christmas Pageant



**Sunday, December 18, 2022  
in the 11 o'clock service**

The children of the Sunday School,  
assisted by a live menagerie of sheep,  
goats and a donkey, re-enact the  
timeless story of Jesus' birth



**Want to participate or help at the Pageant?  
Contact Vicki Rispoli at [vrispoli@calvarypgh.org](mailto:vrispoli@calvarypgh.org)**

**Deadline (Friday):**

**Publication Date (Sunday):**

January 6	January 15
February 3	February 12 [Lenten Issue]
March 10	March 19 [Easter Issue]
April 7	April 16 [End of Program Year]
May 5	May 14
June 2	June 11 [Summer Issue]
August 11	August 20 [Beginning of Program Year]
September 8	September 17
October 6	October 15
November 3	November 12 [Advent Issue]
December 1	December 10

## 2023 CALENDAR

January	February	March	April																																																																																																																																																																																						
<table border="1"> <tr><th>Su</th><th>Mo</th><th>Tu</th><th>We</th><th>Th</th><th>Fr</th><th>Sa</th></tr> <tr><td>1</td><td>2</td><td>3</td><td>4</td><td>5</td><td>6</td><td>7</td></tr> <tr><td>8</td><td>9</td><td>10</td><td>11</td><td>12</td><td>13</td><td>14</td></tr> <tr><td>15</td><td>16</td><td>17</td><td>18</td><td>19</td><td>20</td><td>21</td></tr> <tr><td>22</td><td>23</td><td>24</td><td>25</td><td>26</td><td>27</td><td>28</td></tr> <tr><td>29</td><td>30</td><td>31</td><td></td><td></td><td></td><td></td></tr> </table>	Su	Mo	Tu	We	Th	Fr	Sa	1	2	3	4	5	6	7	8	9	10	11	12	13	14	15	16	17	18	19	20	21	22	23	24	25	26	27	28	29	30	31					<table border="1"> <tr><th>Su</th><th>Mo</th><th>Tu</th><th>We</th><th>Th</th><th>Fr</th><th>Sa</th></tr> <tr><td></td><td></td><td></td><td>1</td><td>2</td><td>3</td><td>4</td></tr> <tr><td>5</td><td>6</td><td>7</td><td>8</td><td>9</td><td>10</td><td>11</td></tr> <tr><td>12</td><td>13</td><td>14</td><td>15</td><td>16</td><td>17</td><td>18</td></tr> <tr><td>19</td><td>20</td><td>21</td><td>22</td><td>23</td><td>24</td><td>25</td></tr> <tr><td>26</td><td>27</td><td>28</td><td></td><td></td><td></td><td></td></tr> </table>	Su	Mo	Tu	We	Th	Fr	Sa				1	2	3	4	5	6	7	8	9	10	11	12	13	14	15	16	17	18	19	20	21	22	23	24	25	26	27	28					<table border="1"> <tr><th>Su</th><th>Mo</th><th>Tu</th><th>We</th><th>Th</th><th>Fr</th><th>Sa</th></tr> <tr><td></td><td></td><td></td><td>1</td><td>2</td><td>3</td><td>4</td></tr> <tr><td>5</td><td>6</td><td>7</td><td>8</td><td>9</td><td>10</td><td>11</td></tr> <tr><td>12</td><td>13</td><td>14</td><td>15</td><td>16</td><td>17</td><td>18</td></tr> <tr><td>19</td><td>20</td><td>21</td><td>22</td><td>23</td><td>24</td><td>25</td></tr> <tr><td>26</td><td>27</td><td>28</td><td>29</td><td>30</td><td>31</td><td></td></tr> </table>	Su	Mo	Tu	We	Th	Fr	Sa				1	2	3	4	5	6	7	8	9	10	11	12	13	14	15	16	17	18	19	20	21	22	23	24	25	26	27	28	29	30	31		<table border="1"> <tr><th>Su</th><th>Mo</th><th>Tu</th><th>We</th><th>Th</th><th>Fr</th><th>Sa</th></tr> <tr><td></td><td></td><td></td><td></td><td></td><td></td><td>1</td></tr> <tr><td>2</td><td>3</td><td>4</td><td>5</td><td>6</td><td>7</td><td>8</td></tr> <tr><td>9</td><td>10</td><td>11</td><td>12</td><td>13</td><td>14</td><td>15</td></tr> <tr><td>16</td><td>17</td><td>18</td><td>19</td><td>20</td><td>21</td><td>22</td></tr> <tr><td>23</td><td>24</td><td>25</td><td>26</td><td>27</td><td>28</td><td>29</td></tr> <tr><td>30</td><td></td><td></td><td></td><td></td><td></td><td></td></tr> </table>	Su	Mo	Tu	We	Th	Fr	Sa							1	2	3	4	5	6	7	8	9	10	11	12	13	14	15	16	17	18	19	20	21	22	23	24	25	26	27	28	29	30													
Su	Mo	Tu	We	Th	Fr	Sa																																																																																																																																																																																			
1	2	3	4	5	6	7																																																																																																																																																																																			
8	9	10	11	12	13	14																																																																																																																																																																																			
15	16	17	18	19	20	21																																																																																																																																																																																			
22	23	24	25	26	27	28																																																																																																																																																																																			
29	30	31																																																																																																																																																																																							
Su	Mo	Tu	We	Th	Fr	Sa																																																																																																																																																																																			
			1	2	3	4																																																																																																																																																																																			
5	6	7	8	9	10	11																																																																																																																																																																																			
12	13	14	15	16	17	18																																																																																																																																																																																			
19	20	21	22	23	24	25																																																																																																																																																																																			
26	27	28																																																																																																																																																																																							
Su	Mo	Tu	We	Th	Fr	Sa																																																																																																																																																																																			
			1	2	3	4																																																																																																																																																																																			
5	6	7	8	9	10	11																																																																																																																																																																																			
12	13	14	15	16	17	18																																																																																																																																																																																			
19	20	21	22	23	24	25																																																																																																																																																																																			
26	27	28	29	30	31																																																																																																																																																																																				
Su	Mo	Tu	We	Th	Fr	Sa																																																																																																																																																																																			
						1																																																																																																																																																																																			
2	3	4	5	6	7	8																																																																																																																																																																																			
9	10	11	12	13	14	15																																																																																																																																																																																			
16	17	18	19	20	21	22																																																																																																																																																																																			
23	24	25	26	27	28	29																																																																																																																																																																																			
30																																																																																																																																																																																									
May	June	July	August																																																																																																																																																																																						
<table border="1"> <tr><th>Su</th><th>Mo</th><th>Tu</th><th>We</th><th>Th</th><th>Fr</th><th>Sa</th></tr> <tr><td></td><td>1</td><td>2</td><td>3</td><td>4</td><td>5</td><td>6</td></tr> <tr><td>7</td><td>8</td><td>9</td><td>10</td><td>11</td><td>12</td><td>13</td></tr> <tr><td>14</td><td>15</td><td>16</td><td>17</td><td>18</td><td>19</td><td>20</td></tr> <tr><td>21</td><td>22</td><td>23</td><td>24</td><td>25</td><td>26</td><td>27</td></tr> <tr><td>28</td><td>29</td><td>30</td><td>31</td><td></td><td></td><td></td></tr> </table>	Su	Mo	Tu	We	Th	Fr	Sa		1	2	3	4	5	6	7	8	9	10	11	12	13	14	15	16	17	18	19	20	21	22	23	24	25	26	27	28	29	30	31				<table border="1"> <tr><th>Su</th><th>Mo</th><th>Tu</th><th>We</th><th>Th</th><th>Fr</th><th>Sa</th></tr> <tr><td></td><td></td><td></td><td></td><td>1</td><td>2</td><td>3</td></tr> <tr><td>4</td><td>5</td><td>6</td><td>7</td><td>8</td><td>9</td><td>10</td></tr> <tr><td>11</td><td>12</td><td>13</td><td>14</td><td>15</td><td>16</td><td>17</td></tr> <tr><td>18</td><td>19</td><td>20</td><td>21</td><td>22</td><td>23</td><td>24</td></tr> <tr><td>25</td><td>26</td><td>27</td><td>28</td><td>29</td><td>30</td><td></td></tr> </table>	Su	Mo	Tu	We	Th	Fr	Sa					1	2	3	4	5	6	7	8	9	10	11	12	13	14	15	16	17	18	19	20	21	22	23	24	25	26	27	28	29	30		<table border="1"> <tr><th>Su</th><th>Mo</th><th>Tu</th><th>We</th><th>Th</th><th>Fr</th><th>Sa</th></tr> <tr><td></td><td></td><td></td><td></td><td></td><td></td><td>1</td></tr> <tr><td>2</td><td>3</td><td>4</td><td>5</td><td>6</td><td>7</td><td>8</td></tr> <tr><td>9</td><td>10</td><td>11</td><td>12</td><td>13</td><td>14</td><td>15</td></tr> <tr><td>16</td><td>17</td><td>18</td><td>19</td><td>20</td><td>21</td><td>22</td></tr> <tr><td>23</td><td>24</td><td>25</td><td>26</td><td>27</td><td>28</td><td>29</td></tr> <tr><td>30</td><td>31</td><td></td><td></td><td></td><td></td><td></td></tr> </table>	Su	Mo	Tu	We	Th	Fr	Sa							1	2	3	4	5	6	7	8	9	10	11	12	13	14	15	16	17	18	19	20	21	22	23	24	25	26	27	28	29	30	31						<table border="1"> <tr><th>Su</th><th>Mo</th><th>Tu</th><th>We</th><th>Th</th><th>Fr</th><th>Sa</th></tr> <tr><td></td><td></td><td></td><td></td><td></td><td></td><td>1</td></tr> <tr><td>2</td><td>3</td><td>4</td><td>5</td><td>6</td><td>7</td><td>8</td></tr> <tr><td>9</td><td>10</td><td>11</td><td>12</td><td>13</td><td>14</td><td>15</td></tr> <tr><td>16</td><td>17</td><td>18</td><td>19</td><td>20</td><td>21</td><td>22</td></tr> <tr><td>23</td><td>24</td><td>25</td><td>26</td><td>27</td><td>28</td><td>29</td></tr> <tr><td>30</td><td>31</td><td></td><td></td><td></td><td></td><td></td></tr> </table>	Su	Mo	Tu	We	Th	Fr	Sa							1	2	3	4	5	6	7	8	9	10	11	12	13	14	15	16	17	18	19	20	21	22	23	24	25	26	27	28	29	30	31					
Su	Mo	Tu	We	Th	Fr	Sa																																																																																																																																																																																			
	1	2	3	4	5	6																																																																																																																																																																																			
7	8	9	10	11	12	13																																																																																																																																																																																			
14	15	16	17	18	19	20																																																																																																																																																																																			
21	22	23	24	25	26	27																																																																																																																																																																																			
28	29	30	31																																																																																																																																																																																						
Su	Mo	Tu	We	Th	Fr	Sa																																																																																																																																																																																			
				1	2	3																																																																																																																																																																																			
4	5	6	7	8	9	10																																																																																																																																																																																			
11	12	13	14	15	16	17																																																																																																																																																																																			
18	19	20	21	22	23	24																																																																																																																																																																																			
25	26	27	28	29	30																																																																																																																																																																																				
Su	Mo	Tu	We	Th	Fr	Sa																																																																																																																																																																																			
						1																																																																																																																																																																																			
2	3	4	5	6	7	8																																																																																																																																																																																			
9	10	11	12	13	14	15																																																																																																																																																																																			
16	17	18	19	20	21	22																																																																																																																																																																																			
23	24	25	26	27	28	29																																																																																																																																																																																			
30	31																																																																																																																																																																																								
Su	Mo	Tu	We	Th	Fr	Sa																																																																																																																																																																																			
						1																																																																																																																																																																																			
2	3	4	5	6	7	8																																																																																																																																																																																			
9	10	11	12	13	14	15																																																																																																																																																																																			
16	17	18	19	20	21	22																																																																																																																																																																																			
23	24	25	26	27	28	29																																																																																																																																																																																			
30	31																																																																																																																																																																																								
September	October	November	December																																																																																																																																																																																						
<table border="1"> <tr><th>Su</th><th>Mo</th><th>Tu</th><th>We</th><th>Th</th><th>Fr</th><th>Sa</th></tr> <tr><td></td><td></td><td></td><td></td><td></td><td>1</td><td>2</td></tr> <tr><td>3</td><td>4</td><td>5</td><td>6</td><td>7</td><td>8</td><td>9</td></tr> <tr><td>10</td><td>11</td><td>12</td><td>13</td><td>14</td><td>15</td><td>16</td></tr> <tr><td>17</td><td>18</td><td>19</td><td>20</td><td>21</td><td>22</td><td>23</td></tr> <tr><td>24</td><td>25</td><td>26</td><td>27</td><td>28</td><td>29</td><td>30</td></tr> </table>	Su	Mo	Tu	We	Th	Fr	Sa						1	2	3	4	5	6	7	8	9	10	11	12	13	14	15	16	17	18	19	20	21	22	23	24	25	26	27	28	29	30	<table border="1"> <tr><th>Su</th><th>Mo</th><th>Tu</th><th>We</th><th>Th</th><th>Fr</th><th>Sa</th></tr> <tr><td>1</td><td>2</td><td>3</td><td>4</td><td>5</td><td>6</td><td>7</td></tr> <tr><td>8</td><td>9</td><td>10</td><td>11</td><td>12</td><td>13</td><td>14</td></tr> <tr><td>15</td><td>16</td><td>17</td><td>18</td><td>19</td><td>20</td><td>21</td></tr> <tr><td>22</td><td>23</td><td>24</td><td>25</td><td>26</td><td>27</td><td>28</td></tr> <tr><td>29</td><td>30</td><td>31</td><td></td><td></td><td></td><td></td></tr> </table>	Su	Mo	Tu	We	Th	Fr	Sa	1	2	3	4	5	6	7	8	9	10	11	12	13	14	15	16	17	18	19	20	21	22	23	24	25	26	27	28	29	30	31					<table border="1"> <tr><th>Su</th><th>Mo</th><th>Tu</th><th>We</th><th>Th</th><th>Fr</th><th>Sa</th></tr> <tr><td></td><td></td><td></td><td></td><td>1</td><td>2</td><td>3</td></tr> <tr><td>4</td><td>5</td><td>6</td><td>7</td><td>8</td><td>9</td><td>10</td></tr> <tr><td>11</td><td>12</td><td>13</td><td>14</td><td>15</td><td>16</td><td>17</td></tr> <tr><td>18</td><td>19</td><td>20</td><td>21</td><td>22</td><td>23</td><td>24</td></tr> <tr><td>25</td><td>26</td><td>27</td><td>28</td><td>29</td><td>30</td><td></td></tr> </table>	Su	Mo	Tu	We	Th	Fr	Sa					1	2	3	4	5	6	7	8	9	10	11	12	13	14	15	16	17	18	19	20	21	22	23	24	25	26	27	28	29	30		<table border="1"> <tr><th>Su</th><th>Mo</th><th>Tu</th><th>We</th><th>Th</th><th>Fr</th><th>Sa</th></tr> <tr><td></td><td></td><td></td><td></td><td></td><td></td><td>1</td></tr> <tr><td>2</td><td>3</td><td>4</td><td>5</td><td>6</td><td>7</td><td>8</td></tr> <tr><td>9</td><td>10</td><td>11</td><td>12</td><td>13</td><td>14</td><td>15</td></tr> <tr><td>16</td><td>17</td><td>18</td><td>19</td><td>20</td><td>21</td><td>22</td></tr> <tr><td>23</td><td>24</td><td>25</td><td>26</td><td>27</td><td>28</td><td>29</td></tr> <tr><td>30</td><td>31</td><td></td><td></td><td></td><td></td><td></td></tr> </table>	Su	Mo	Tu	We	Th	Fr	Sa							1	2	3	4	5	6	7	8	9	10	11	12	13	14	15	16	17	18	19	20	21	22	23	24	25	26	27	28	29	30	31												
Su	Mo	Tu	We	Th	Fr	Sa																																																																																																																																																																																			
					1	2																																																																																																																																																																																			
3	4	5	6	7	8	9																																																																																																																																																																																			
10	11	12	13	14	15	16																																																																																																																																																																																			
17	18	19	20	21	22	23																																																																																																																																																																																			
24	25	26	27	28	29	30																																																																																																																																																																																			
Su	Mo	Tu	We	Th	Fr	Sa																																																																																																																																																																																			
1	2	3	4	5	6	7																																																																																																																																																																																			
8	9	10	11	12	13	14																																																																																																																																																																																			
15	16	17	18	19	20	21																																																																																																																																																																																			
22	23	24	25	26	27	28																																																																																																																																																																																			
29	30	31																																																																																																																																																																																							
Su	Mo	Tu	We	Th	Fr	Sa																																																																																																																																																																																			
				1	2	3																																																																																																																																																																																			
4	5	6	7	8	9	10																																																																																																																																																																																			
11	12	13	14	15	16	17																																																																																																																																																																																			
18	19	20	21	22	23	24																																																																																																																																																																																			
25	26	27	28	29	30																																																																																																																																																																																				
Su	Mo	Tu	We	Th	Fr	Sa																																																																																																																																																																																			
						1																																																																																																																																																																																			
2	3	4	5	6	7	8																																																																																																																																																																																			
9	10	11	12	13	14	15																																																																																																																																																																																			
16	17	18	19	20	21	22																																																																																																																																																																																			
23	24	25	26	27	28	29																																																																																																																																																																																			
30	31																																																																																																																																																																																								



## On-Going at Calvary

### EECM Food Pantry

East End Cooperative Ministry operates the second largest food pantry in Pittsburgh. Donations can be dropped off at Calvary during office hours: Monday thru Friday 9 a.m. to 4 p.m. and on Sunday mornings. Below is a list of items particularly requested at this time. **Thank you to all who have continued to donate to the EECM food cart.**

Your support is greatly appreciated.

- Bottled Water
- Instant mashed potatoes
- Canned tomato sauce, vegetables, beans
- Spaghetti and macaroni pasta
- Canned soups
- Mac & Cheese boxes
- Oatmeal and whole grain cereals
- White and brown rice
- Disposable utensils (fork, spoon, knife)
- Disposable plates
- Disposable bowls
- Ziploc bags, any size
- Napkins
- Paper Towels
- Sugar
- Salt ■

### Plastic Recycling

Thank you to the many people who are recycling plastic film and bags to the box located in the Parish House lobby across from the reception desk. We will continue our practice of recycling here at Calvary. You are helping to keep thousands of pounds of waste out of landfills. (And, yes, bubble wrap is recyclable!) ■

## Altar Flowers

Help us keep the church in full bloom by donating flowers in memory of, or in honor of, someone special. If you would like to place a memorial listing, please contact Kim Pieratt in the church office at 412.661.0120, ext. 111. ■

## Stay in Touch with the Diocese

Visit the diocesan website at  
**[www.episcopalpgh.org](http://www.episcopalpgh.org)**

Submissions for publication on the diocesan web site, calendar, and the *Grace Happens* weekly e-newsletter should be sent electronically to  
**[info@episcopalpgh.org](mailto:info@episcopalpgh.org)**.

Please be sure to include your complete contact information with any submission. ■

### The Episcopal Diocese of Pittsburgh mailing address:

325 Oliver Avenue, Suite 300, Pittsburgh, PA 15222  
412.721.0853 | [info@episcopalpgh.org](mailto:info@episcopalpgh.org)

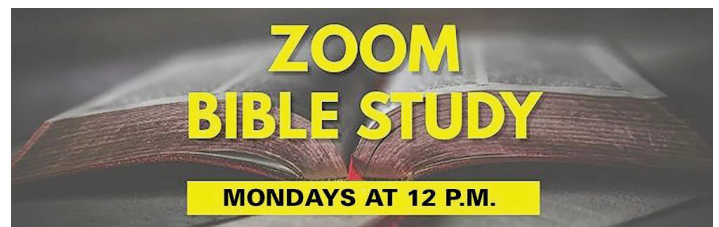
**Andy Muhl, Executive Assistant**

412.721.0853 ext. 251 | [amuhl@episcopalpgh.org](mailto:amuhl@episcopalpgh.org) ■

Have you returned your  
2023 Pledge Card?



The Beloved Community Initiative is hosting concurrent sessions at Calvary and St. Thomas, Oakmont, beginning in November and January. If you are interested in participating at St. Thomas, please contact Shahnaz Alam Denlinger at [s.alamdenlinger@episcopalpgh.org](mailto:s.alamdenlinger@episcopalpgh.org) or call her 412.828.9680. If you are interested in participating at Calvary from November to January, please email Adam Bailey at [atfbailey@gmail.com](mailto:atfbailey@gmail.com). Sessions at Calvary will meet on Monday evenings, November 14 to January 23, from 7 to 8:30, with a break for the holidays. ■



*Led by The Rev. Geoffrey Royce, Deacon*

Sign-up for receiving the Zoom link  
by writing to [groyce@calvarypgh.org](mailto:groyce@calvarypgh.org)

This will be a discussion study lasting about one hour.

We are reading The Book of Job. ■

## Pittsburgh Episcopal Creation Care Network

This is a place for parish members from throughout the Episcopal Diocese of Pittsburgh to share information about energy saving and clean-up projects; share resources and ideas; ask questions and state concerns; and post information about environmental events. All Calvary members are welcome to join and contribute whenever they wish. Visit [www.facebook.com/groups/1252049508868224](http://www.facebook.com/groups/1252049508868224) ■

Please remember Calvary Church  
in your will.